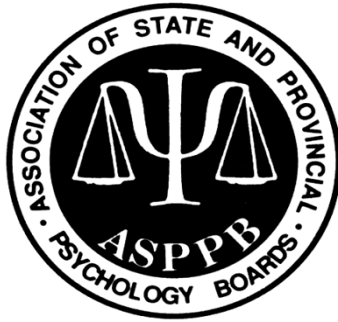


2010

# Psychology Licensing Exam Scores by Doctoral Program

---



*Prepared by*  
*Association of State and Provincial Psychology Boards*  
*P.O. Box 241245*  
*Montgomery, AL 36124-1245*

---

©2010 by the Association of State and Provincial Psychology Boards. All rights reserved. No part of this document may be reproduced in any form without the permission in writing of the Association of State and Provincial Psychology Boards. For information, contact: Association of State and Provincial Psychology Boards, P.O. Box 241245, Montgomery, AL 36124-1245.

# Contents

Foreword.....	4
ASPPB/National Register Designation Criteria: Guidelines for Defining a Doctoral Degree in Psychology .....	5
The Purposes of the Examination .....	6
Test Construction .....	6
Table 1. Item Development and Test Construction Flowchart.....	8
Test Content and Administration .....	9
Content Outline of the EPPP .....	9
Table 2. Content Outline of the EPPP for Administrations from April 1, 1997 through July 31, 2011 .....	10
Table 3. Content Outline of the EPPP for Administrations from August 1, 2011 Forward .....	11
Further Information .....	12
Table 4: EPPP Performance by Doctoral Program .....	13

## Foreword

The Association of State and Provincial Psychology Boards (ASPPB) is pleased to present the nineteenth edition of the Psychology Licensing Exam Scores by Doctoral Program. It includes graduate training programs accredited by the American Psychological Association or Canadian Psychological Association, or designated by the Association of State and Provincial Psychology Boards and the Council for the National Register of Health Service Providers in Psychology, with the criteria for designation listed on pages four and five of this report. The listing has been recently updated, with the addition of psychology programs not previously listed in this report. This edition forward will provide a cumulative report including the most recent complete five years of data. The data includes all candidates who took the exam during that five-year period, not just first-time test takers. Therefore, if someone has taken the exam more than once during the five-year period, the data for all of their administrations is included. The psychology programs included may not currently be ASPPB/NR designated, but were designated at some point during the five-year data collection period.

The list of Designated Doctoral Programs in Psychology is accompanied by the most recent five-years of statistical information on the performance of candidates for licensure by graduate program on the Examination for Professional Practice in Psychology (EPPP). ASPPB recommends a passing point for independent practice equal to a scaled score of 500. At the time of this compilation, more than 90% of the 64 ASPPB member jurisdictions (licensing authorities in the United States and Canada) use a passing score of 500, the ASPPB recommended passing score. The statistical information for candidates includes, where the number is three or greater, the number of candidates testing from each of the programs, the number passing, the pass rate, and percent scores by content area by program. Pass rate information in this report is presented on the basis of the number of candidates with a scaled score of 500 or more (e.g., an "ASPPB-Recommended Pass Rate"). Responsibility for actual pass/fail decisions rests with individual licensing jurisdictions.

Please note that care should be exercised if comparisons across schools are made. If performance on the EPPP is seen as an outcome measure of those objectives, it should be viewed as only one such measure.

The program data presented are based solely on information supplied by candidates when they apply to sit for the EPPP.

We believe that those who train psychologists and those who examine them for licensure must maintain an ongoing dialogue if candidates for licensure and the consumers of psychological services are to be well served. Our intent is to make the Psychology Licensing Exam Scores by Doctoral Program a document that will inform and influence individuals selecting a doctoral program, educators of psychologists, and the developers of the EPPP. To that end, we encourage your comments and suggestions. Correspondence should be sent to the ASPPB central office at the address below.

We sincerely hope that this document will prove useful to faculty members and students of psychology. We very much appreciate your interest in licensure and the EPPP.

Jack B. Schaffer, Ph.D., ABPP  
President, ASPPB

Stephen T. DeMers, Ed.D.  
Executive Officer, ASPPB

ASPPB Central Office  
P.O. Box 241245  
Montgomery, Alabama 36124-1245

I. Leon Smith, Ph.D.  
President, PES

Angela Grima, Ph.D.  
EPPP Program Director, PES

Robert Lipkins, Ph.D.  
EPPP Program Director, PES

Professional Examination Service  
475 Riverside Drive, Suite 600  
New York, New York 10115-0089

## **ASPPB/National Register Designation Criteria: Guidelines for Defining a Doctoral Degree in Psychology**

The following criteria, as developed at the 1977 National Conference on Education and Credentialing in Psychology, will be used to identify doctoral programs as psychology programs. Reference to "professional psychology" refers to psychology as a profession. The term is not intended in the more restrictive sense of applied or practice areas of psychology as the intent is for a generic designation system.

1. Programs that are accredited by the American Psychological Association (APA) or the Canadian Psychological Association (CPA) are recognized as meeting the definition of a professional psychology program. The criteria for accreditation serve as a model for professional psychology training.

OR all of the following criteria, 2 through 11:

2. Training in professional psychology is doctoral training offered in a regionally accredited institution of higher education. A regionally accredited institution is an institution with regional accreditation in the United States, an institution with provincial authorization in Canada, or in other countries, an institution that is accredited by a body that is deemed by the ASPPB/National Register Designation Committee to be performing a function equivalent to U.S. regional accrediting bodies.

3. The program, wherever it may be administratively housed, must be clearly identified and labeled as a psychology program. Such a program must specify in pertinent institutional catalogues and brochures its intent to educate and train professional psychologists.

4. The psychology program must stand as a recognizable, coherent organizational entity within the institution.

5. There must be a clear authority and primary responsibility for the core and specialty areas whether or not the program cuts across administrative lines.

6. The program must be an integrated, organized sequence of study.

7. There must be an identifiable psychology faculty sufficient in size and breadth to carry out its responsibilities and a psychologist responsible for the program.

8. The program must have an identifiable body of students who are matriculated in that program for a degree.

9. The program must include supervised practicum, internship, field or laboratory training appropriate to the practice of psychology.

10. The curriculum shall encompass a minimum of three academic years of full time graduate study and a minimum of one year's residency at the educational institution granting the doctoral degree. The core program shall require every student to demonstrate competence in each of the following substantive areas. This typically will be met through substantial instruction in each of these foundational areas, as demonstrated by a minimum of three graduate semester hours, five or more graduate quarter hours (when an academic term is other than a semester, credit hours will be evaluated on the basis of fifteen hours of classroom instruction per semester hour), or the equivalent:

- a. scientific and professional ethics and standards;
- b. research design and methodology;

- c. statistics;
- d. psychometric theory;
- e. biological bases of behavior: physiological psychology, comparative psychology; neuropsychology, sensation and perception, and psychopharmacology;
- f. cognitive-affective bases of behavior: learning, thinking, motivation, and emotion;
- g. social bases of behavior: social psychology, group processes, organizational and systems theory; and
- h. individual differences: personality theory, human development, and abnormal psychology.

11. All professional education programs in psychology shall include course requirements in specialty areas.

## The Purposes of the Examination

The Examination for Professional Practice in Psychology (EPPP), developed by ASPPB, is provided to state and provincial boards of psychology to assist them in their evaluation of the qualifications of applicants for licensure and certification. This standardized examination is constructed by ASPPB with the assistance of the Professional Examination Service (PES). The EPPP is administered continuously in computerized delivery format through the Prometric network of more than 320 computer testing centers in the United States and Canada, with the support of state and provincial boards acting collectively through ASPPB. The examination will be made available in paper-and-pencil format only in jurisdictions that do not have access to the Prometric network (e.g., the Maritime Provinces of Canada).

The resources of individual psychologists, ASPPB, and PES are used in the ongoing development of and improvements to the examination program. These combined resources are greater than those available to any individual board. The EPPP is only one part of the evaluation procedure used by state and provincial boards. To determine candidates' competence to practice the profession of psychology, most boards supplement the EPPP with other requirements and/or assessment procedures. The EPPP is intended to evaluate the knowledge that the most recent practice analysis has determined as foundational to the competent practice of psychology. Most candidates taking the EPPP have obtained a doctoral degree in psychology, a year of

supervised experience, and appropriate postdoctoral experience. Such candidates are expected to have acquired a broad basic knowledge of psychology, regardless of individual specialties. This knowledge and the candidate's ability to apply it are assessed through the candidate's responses to objective, multiple-choice questions representative of the field at large. The average pass-rate of doctoral level candidates who are taking the test for the first time exceeds 80% in the most recent sample years.

ASPPB, PES, and member boards cannot send copies of past examinations to applicants. ASPPB publishes a document entitled *Items from Previous Examinations* that includes 250 items from former examinations, a reference list, and an answer key.

## Test Construction

The ASPPB Examination Committee along with PES is responsible for the construction of the EPPP. Its members are appointed by the Board of Directors of ASPPB and are chosen for their outstanding credentials and exceptional achievements in their respective specialties. Members of this committee are listed in the "EPPP Exam Information" section of the ASPPB website at <http://www.asppb.net>.

The examination development process is intended to maximize the content validity of the examination. A brief outline of the process follows.

1. The item development process is overseen by ASPPB's Item Development Committee. Subject-matter experts in psychology are trained in item-writing by experts in item development and

psychometrics at workshops conducted periodically throughout the U.S. and Canada. Those subject-matter experts then write items over a period of time, with guidance and oversight from members of the Item Development Committee.

2. All items are reviewed and validated by the subject-matter experts of the Item Development Committee. Items are evaluated for subject-matter accuracy, relevance to practice, appropriateness to entry-level practice, contribution to public protection, and freedom from bias.

3. Items judged to be of sufficient quality by the Item Development Committee then receive editorial and psychometric review by PES staff to ensure conformity to established psychometric principles and EPPP Style Guidelines and are entered into the EPPP item bank.

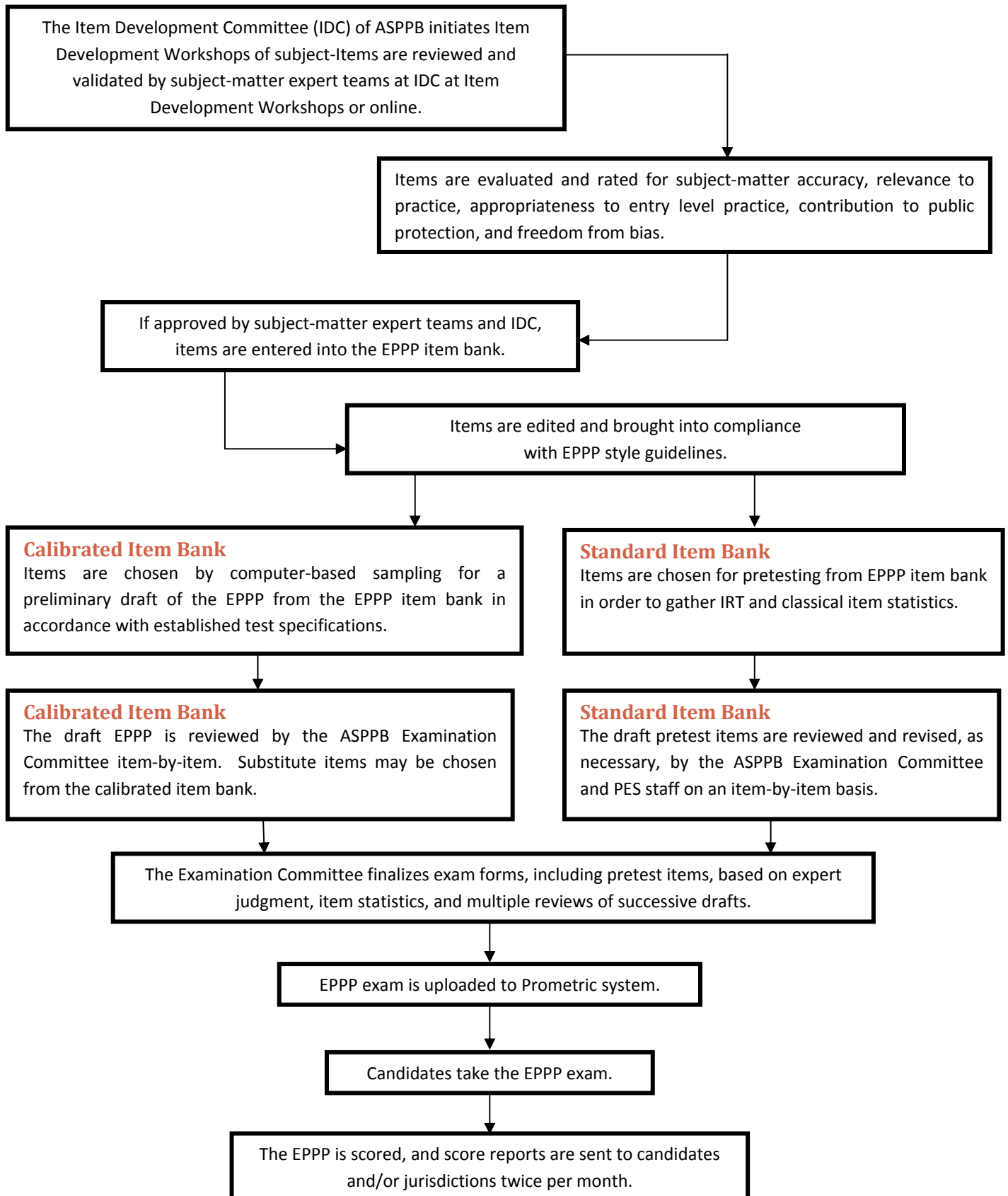
4. A draft examination is constructed by PES based on computer-based sampling of items from the EPPP item bank with known psychometric properties. This draft is constructed on the basis of a content outline

derived from a job analysis and a role delineation study of the profession of psychology. At a meeting of the ASPPB Examination Committee, the preliminary draft is reviewed and validated item-by-item to ensure conformance with test specifications.

5. At a second meeting of the Examination Committee, the draft of the examination is reviewed a second time item-by-item to ensure content accuracy, appropriateness of language and format, and adequate item statistics.

6. PES constructs a final form of the examination on the basis of the Examination Committee's second review and comments. The final form of the examination is loaded onto the Prometric system and made available to the testing centers in the U.S. and Canada. When the examination is finalized and administered, it is supplemented with 25 items for pre-testing (effective August 1, 2011 there will be 50 pretest items and 175 scored items). These pre-test items are randomly distributed throughout the examination and are not counted as part of a candidate's score.

**Table 1. Item Development and Test Construction Flowchart**



## Test Content and Administration

The EPPP examination consists of objective multiple-choice questions covering knowledge judged by practicing psychologists to be essential to the professional practice of psychology. Each form of the examination contains 200 operational items and 25 pretest items. Please note that effective August 1, 2011 each form of the examination will contain 225 items, of which 175 are scored and 50 are pretest items. Each item has four suggested answers, only **one** of which is correct. A candidate's reported score on the EPPP is based on the total number of correct responses, with no penalty for incorrect answers. Therefore, it is to the candidate's advantage to answer every item even when uncertain of the correct response.

The EPPP is administered by computer at Prometric Testing Centers, under standardized conditions in accordance with procedures described in a test administration manual distributed to each testing center by Prometric and approved by ASPPB. Only candidates approved by a state or provincial board as applicants for licensure are allowed to take the EPPP.

A bilingual French/English version of the EPPP is also available.

Candidates with documented disabilities or impairments who wish to be tested under nonstandard conditions should notify their respective boards in accordance with published procedures. Candidates should provide boards with ample time to evaluate these requests and notify PES of any special arrangements that may be required for the test administration. Appropriate supporting documentation must be submitted along with the request.

In addition to its administration in North America, the EPPP is also available by request at selected Defense Activity for Non-Traditional Education Support (DANTES) centers located on United States Army bases in Europe. **Candidates who have access to such centers** and who are interested in overseas testing must notify the state or provincial board to

which they have applied for licensure or certification.

In the past EPPP scores have been reported as scaled scores, with a range from 200 to 800 and a recommended passing score for independent practice of 500. An individual candidate's test is scored by PES, which reports the score and relevant normative data to the licensing jurisdiction. As noted, ASPPB recommends a passing score of 500, but not all jurisdictions subscribe to that recommendation. In this document, a "pass rate" is computed on the basis of the number of test candidates who score 500 (the ASPPB recommended passing score) or more divided by the total number of candidates (where the number of candidates is 3 or greater during the previous five years).

All procedures and decisions with regard to licensure are the responsibility of the individual boards. Any questions about these procedures should be directed to the appropriate state or provincial board.

## Content Outline of the EPPP

### For EPPP Administrations through July 31, 2011

At the completion of an extensive Practice Analysis study in 1995, the test specifications for the EPPP were revised. These specifications were implemented for the first time with the development and administration of the April 1997 EPPP. Eight, rather than five, content domains were identified as being related to current practice. In 2003, a Practice Analysis Update was conducted to refine the delineation of roles and responsibilities performed by psychologists and the content areas and knowledge required in practice. In keeping with changes in contemporary practice, special focus was placed on newer areas of the profession that have received empirical support. The performance of students in the various doctoral programs has been summarized in Table 1 of this report, using the content domains below.

A new study, *An Analysis of Professional Practice with a Focus on the Validation and Assessment of*

Competencies was completed in 2010. The Practice Analysis resulted in:

- The identification and validation of underlying professional competencies,
- The identification of assessment methods to best measure underlying professional competencies, and
- Revised test specifications for the Examination for Professional Psychology (EPPP) updating the knowledge base and

integrating additional relevant competencies. The revised test specifications, included herein as Table 3, will be implemented on EPPP administrations beginning August 1, 2011. Data tables provided in future editions of this report will be based on those new test specifications.

The written practice analysis report will be available at [www.asppb.net](http://www.asppb.net) upon completion.

**Table 2. Content Outline of the EPPP for Administrations from April 1, 1997 through July 31, 2011**

<i>Rubric</i>	<i>Content Area</i>	<i>Percent of the Exam*</i>
<b>01</b>	<b>Biological Bases of Behavior</b> — knowledge of (a) biological and neural bases of behavior, (b) psychopharmacology, and (c) methodologies supporting this body of knowledge	<b>11%</b>
<b>02</b>	<b>Cognitive-Affective Bases of Behavior</b> — knowledge of (a) cognition & its neural bases, (b) theories & empirical bases of learning, memory, motivation, affect, emotion, & executive function, & (c) factors that influence cognitive performance and/or emotional experience & their interaction	<b>13%</b>
<b>03</b>	<b>Social and Multicultural Bases of Behavior</b> — knowledge of (a) intrapersonal, interpersonal, intragroup, & intergroup processes and dynamics, (b) theories of personality, & (c) issues in diversity	<b>12%</b>
<b>04</b>	<b>Growth and Lifespan Development</b> — knowledge of (a) age-appropriate development across the life span, (b) atypical patterns of development, & (c) the protective & risk factors that influence developmental outcomes for individuals	<b>13%</b>
<b>05</b>	<b>Assessment and Diagnosis</b> — knowledge of (a) psychometrics, (b) assessment models & instruments, (c) assessment methods for initial status of & change by individuals, couples, families, groups, & organizations/systems, and (d) diagnostic classification systems & their limitations	<b>14%</b>
<b>06</b>	<b>Treatment, Intervention, and Prevention</b> — knowledge of (a) individual, couple, family, group, organizational, or community interventions for specific concerns/disorders in diverse populations, (b) intervention & prevention theories, (c) best practices, & (d) consultation models & processes	<b>15%</b>
<b>07</b>	<b>Research Methods and Statistics</b> — knowledge of (a) research design, methodology, & program evaluation, (b) instrument selection & validation, and (c) statistical models, assumptions, and procedures	<b>7%</b>

**Table 2. Content Outline of the EPPP for Administrations from April 1, 1997 through July 31, 2011**

<i>Rubric</i>	<i>Content Area</i>	<i>Percent of the Exam*</i>
<b>08</b>	<b>Ethical/Legal/Professional Issues</b> — knowledge of (a) codes of ethics, (b) professional standards for practice, (c) legal mandates and restrictions, (d) guidelines for ethical decision-making, and (e) professional training and supervision	<b>15%</b>

\*As approved by the ASPPB Board of Directors on June 21, 2003

**Table 3. Content Outline of the EPPP for Administrations from August 1, 2011 Forward**

<i>Rubric</i>	<i>Content Area</i>	<i>Percent of the Exam**</i>
<b>01</b>	<b>Biological Bases of Behavior</b> — knowledge of (a) biological and neural bases of behavior, (b) psychopharmacology, and (c) methodologies supporting this body of knowledge	<b>12%</b>
<b>02</b>	<b>Cognitive-Affective Bases of Behavior</b> — knowledge of (a) cognition, (b) theories and empirical bases of learning, memory, motivation, affect, emotion, and executive function, and (c) factors that influence cognitive performance and/or emotional experience and their interaction	<b>13%</b>
<b>03</b>	<b>Social and Cultural Bases of Behavior</b> — knowledge of (a) interpersonal, intrapersonal, intergroup, and intragroup processes and dynamics, (b) theories of personality, and (c) diversity issues	<b>12%</b>
<b>04</b>	<b>Growth and Lifespan Development</b> — knowledge of (a) development across the full life span, (b) atypical patterns of development, and (c) the protective and risk factors that influence developmental trajectories of individuals	<b>12%</b>
<b>05</b>	<b>Assessment and Diagnosis</b> — knowledge of (a) psychometrics, (b) assessment models and instruments, (c) assessment methods for initial status of and change by individuals, couples, families, groups, and organizations/systems, and (d) diagnostic classification systems and their limitations	<b>14%</b>
<b>06</b>	<b>Treatment, Intervention, Prevention, and Supervision</b> — knowledge of (a) individual, couple, family, group, organizational, or community interventions for specific problems/disorders in diverse populations, (b) intervention and prevention theories, (c) best practices and practice guidelines, (d) consultation and supervision models, and (e) evidence supporting efficacy and effectiveness of interventions	<b>14%</b>
<b>07</b>	<b>Research Methods and Statistics</b> — knowledge of (a) research design, methodology, and program evaluation, (b) instrument selection and validation, (c) statistical models, assumptions, and procedures, and (d) dissemination methods	<b>8%</b>

**Table 3. Content Outline of the EPPP for Administrations from August 1, 2011 Forward**

<i>Rubric</i>	<i>Content Area</i>	<i>Percent of the Exam**</i>
<b>08</b>	<b>Ethical/Legal/Professional Issues</b> — knowledge of (a) codes of ethics, (b) professional standards for practice, (c) legal mandates and restrictions, (d) guidelines for ethical decision-making, and (e) professional training and supervision	<b>15%</b>

\*\* Approved by the ASPPB Board of Directors on November 24, 2009

### Further Information

For further information about procedures and requirements for licensure and scheduling of examinations, a candidate should write to the psychology licensing or certification board in the state or province in which licensure or certification is being sought. A listing of addresses of state and provincial boards is available from the ASPPB website: [www.asppb.net/ContactLicensingBoards](http://www.asppb.net/ContactLicensingBoards).

Any candidate wanting information regarding requirements for licensure/certification in the

various jurisdictions may access ASPPB's *Handbook of Licensing and Certification Requirements for Psychologists in North America* for no charge at [www.asppb.net/Handbook](http://www.asppb.net/Handbook).

*Items from Previous Examinations*, a publication containing 250 actual retired EPPP questions is available from ASPPB for \$37.50 postage paid. ASPPB can be reached at P.O. Box 241245, Montgomery, Alabama 36124-1245, at (334) 832-4580, or at [asppb@asppb.org](mailto:asppb@asppb.org).

Table 4

## EPPP Performance by Designated Doctoral Program in Psychology

**NOTE: The table below contains self-report information on EPPP candidates who tested between January 2005 and December 2009. Only doctoral programs that are APA/CPA accredited or have met ASPPB/National Register Joint Designation criteria are listed individually by name in the table. Data for individual programs are shown only when there are 3 or more graduates from January 2005 to December 2009. The data includes all candidates who took the exam during that five-year period, not just first-time test takers. Therefore, if someone has taken the exam more than once during the five-year period, the data for all of their administrations is included. The pass rates included in this table are based on the ASPPB recommended passing score of 500 for independent practice. Although each board sets the standard for passing in its respective state or province, at the present time, the majority of jurisdictions using the EPPP accept the ASPPB recommended passing score for independent practice.**

Designated Doctoral Program in Psychology				EPPP Performance			Percent correct by content area							
Jurisdiction	SCHOOL	DEPARTMENT	PROGRAM	NUM	PASS	PASS RATE	Biological Bases of Behavior	Cognitive-Affective Bases of Behavior	Social & Multicultural Bases of Behavior	Growth & Lifespan Development	Assessment and Diagnosis	Treatment/Intervention	Research Methods	Ethical/Legal/Professional Issues
			All Designated and Accredited Doctoral Programs	14,560	11,151	76.60%	71.8%	71.2%	71.8%	71.2%	69.4%	74.2%	68.2%	77.9%
			Doctoral Program - Not Listed (non-Designated, non-accredited)	4,671	3,023	64.70%	66.4%	64.8%	66.1%	64.6%	62.3%	68.8%	58.1%	71.9%
			No Response	917	456	49.73%	61.6%	61.4%	63.1%	62.9%	59.4%	64.9%	54.6%	72.6%
<b>AB</b>	U. of Alberta	Dept of Educ Psych	Counseling	51	37	72.50%	68.0%	71.9%	72.7%	72.9%	69.8%	74.5%	62.1%	79.9%
	U. of Calgary	Dept of Psych	Clinical	21	15	71.40%	79.5%	76.5%	78.6%	73.9%	71.7%	80.1%	75.0%	79.4%
<b>AL</b>	Auburn U.	Dept of Counseling and Counseling Psych	Counseling	25	20	80.00%	71.4%	69.9%	70.6%	71.4%	69.5%	75.8%	72.8%	78.3%
		Dept of Psych	Clinical	33	30	90.90%	75.4%	78.6%	76.7%	73.4%	75.6%	78.8%	77.2%	78.0%
	U. of Alabama	Dept of Psych	Clinical	31	29	93.50%	75.5%	80.8%	75.8%	76.1%	76.5%	81.5%	81.5%	81.9%
	U. of Alabama Birmingham	Dept of Psych	Clinical	10	9	90.00%	80.6%	83.5%	73.3%	74.9%	76.8%	78.7%	80.7%	78.7%
			Medical	11	11	100.00%	85.2%	81.4%	75.8%	76.6%	86.1%	81.7%	90.2%	81.6%
	University of Alabama at Birmingham	Department of Psychiatry	N/A	29	16	55.20%	65.4%	58.5%	59.9%	61.1%	58.9%	63.4%	51.8%	68.5%
<b>AR</b>	U. of Arkansas	Dept of Psych	Clinical	21	20	95.20%	76.4%	82.4%	78.7%	82.2%	79.3%	79.6%	82.8%	83.6%
	U. of Central Arkansas	Dept of Psych & Couns	School	4	2	50.00%	56.7%	62.6%	64.8%	61.4%	57.1%	60.8%	60.7%	65.0%
<b>AZ</b>	Argosy U./Phoenix	Schl of Psych & Behav Sci	Clinical	140	79	56.40%	67.3%	63.5%	65.8%	65.7%	61.7%	69.3%	53.2%	75.5%
	Arizona State U.	College of Education	Counseling	27	25	92.60%	71.4%	74.6%	75.0%	73.4%	72.0%	78.8%	70.1%	82.6%
			School	5	4	80.00%	74.8%	77.5%	73.3%	80.6%	77.9%	78.9%	80.0%	79.3%
		Dept of Psych	Clinical	13	13	100.00%	81.0%	82.8%	77.4%	82.1%	81.6%	79.0%	86.2%	85.2%
	Northern Arizona U.	Center for Excellence in Education	Educational	21	14	66.70%	66.3%	64.0%	67.8%	67.9%	64.2%	64.7%	64.5%	78.7%
	U. of Arizona	Dept of Psych	Clinical	23	21	91.30%	81.3%	81.2%	79.0%	72.9%	77.3%	81.5%	82.1%	81.2%

Designated Doctoral Program in Psychology				EPPP Performance			Percent correct by content area							
Jurisdiction	SCHOOL	DEPARTMENT	PROGRAM	NUM	PASS	PASS RATE	Biological Bases of Behavior	Cognitive-Affective Bases of Behavior	Social & Multicultural Bases of Behavior	Growth & Lifespan Development	Assessment and Diagnosis	Treatment/Intervention	Research Methods	Ethical/Legal/Professional Issues
		Dept of Special Ed And Rehab	School	5	3	60.00%	78.3%	61.1%	63.6%	60.8%	60.9%	65.0%	53.3%	74.4%
<b>BC</b>	Simon Fraser U.	Dept of Psych	Clinical	10	10	100.00%	83.0%	89.9%	82.5%	85.7%	83.2%	82.0%	88.6%	83.1%
	U. of British Columbia	Dept of Educ & Coun Psych	Counseling	21	20	95.20%	71.8%	77.0%	77.3%	80.8%	76.7%	77.3%	78.0%	79.8%
		Dept of Psych	Clinical	18	18	100.00%	83.9%	85.6%	87.3%	87.4%	88.7%	85.7%	92.7%	86.8%
	U. of Victoria	N/A	Clinical Neuropsychology	8	8	100.00%	90.5%	87.7%	79.3%	81.2%	86.2%	87.9%	91.1%	88.0%
			Lifespan Development & Aging	3	2	66.70%	69.3%	71.4%	72.2%	71.2%	73.8%	84.4%	73.8%	83.4%
<b>CA</b>	Alliant International U./CSPP-Alameda	N/A	Clinical	268	192	71.60%	71.2%	67.8%	71.0%	69.2%	65.5%	73.3%	64.7%	77.2%
			Clinical Health	17	9	52.90%	69.6%	65.0%	62.2%	62.2%	67.0%	71.9%	62.9%	68.7%
			Clinical-Ethnic Minority	4	3	75.00%	71.6%	67.3%	65.6%	65.4%	74.1%	68.0%	64.3%	70.2%
			Clinical-Family Child	54	40	74.10%	70.8%	68.2%	71.6%	71.4%	66.9%	71.5%	66.8%	76.3%
			Clinical- Psychodynamic	14	11	78.60%	72.4%	69.3%	71.6%	67.3%	67.7%	75.7%	68.3%	78.2%
	Alliant International U./CSPP-Berkeley	N/A	Clinical	11	6	54.50%	65.5%	58.5%	57.6%	57.7%	54.2%	61.5%	55.2%	63.9%
	Alliant International U./CSPP-Fresno	N/A	Clinical	302	143	47.40%	64.9%	61.8%	63.5%	63.0%	60.5%	66.8%	55.1%	72.5%
	Alliant International U./CSPP-Los Angeles	N/A	Clinical	472	263	55.70%	68.3%	65.8%	66.3%	60.9%	62.4%	67.6%	61.3%	71.9%
			Organizational	4	3	75.00%	63.9%	61.5%	67.7%	71.2%	56.3%	70.7%	53.6%	76.7%
	Alliant International U./CSPP-San Diego	N/A	Clinical	324	208	64.20%	67.5%	66.3%	68.8%	66.2%	65.1%	70.0%	63.5%	74.5%
			Consulting	5	2	40.00%	70.3%	59.6%	72.7%	62.3%	55.1%	70.5%	49.3%	78.7%
			Health	9	6	66.70%	72.9%	66.3%	61.6%	59.7%	64.6%	69.3%	69.4%	75.2%
	Argosy U./SanFranciso Bay Area	N/A	Clinical	75	52	69.30%	67.9%	66.3%	68.2%	66.6%	62.6%	73.2%	54.1%	75.1%
	Azuza Pacific U.	Dept of Graduate Psychology	Clinical	38	23	60.50%	67.7%	65.1%	62.2%	60.5%	63.9%	68.7%	56.1%	73.5%
	Biola U.	Rosemead School of Psych	Clinical	86	71	82.60%	70.5%	72.8%	72.2%	71.0%	69.1%	75.7%	68.7%	76.8%

Designated Doctoral Program in Psychology				EPPP Performance			Percent correct by content area							
Jurisdiction	SCHOOL	DEPARTMENT	PROGRAM	NUM	PASS	PASS RATE	Biological Bases of Behavior	Cognitive-Affective Bases of Behavior	Social & Multicultural Bases of Behavior	Growth & Lifespan Development	Assessment and Diagnosis	Treatment/ Intervention	Research Methods	Ethical/Legal/ Professional Issues
	California Institute of Integral Studies	N/A	Clinical	71	54	76.10%	70.3%	68.4%	72.4%	70.1%	65.6%	75.2%	63.9%	76.5%
	Fuller Theological Seminary	Grad School of Psych	Clinical	115	95	82.60%	75.3%	75.0%	73.8%	72.0%	69.0%	75.1%	70.3%	77.9%
	John F. Kennedy U.	Grad School of Prof Psych	Clinical	73	37	50.70%	66.8%	62.1%	64.7%	62.3%	58.6%	67.8%	50.0%	73.1%
	Loma Linda U.	Dept of Psych	Clinical	60	52	86.70%	74.1%	72.8%	75.5%	70.2%	72.9%	75.6%	74.2%	77.9%
	Pacific Grad School of Psych/SUMSC	N/A	Clinical	201	149	74.10%	71.8%	70.0%	69.4%	68.5%	66.9%	72.7%	66.0%	75.3%
	Pepperdine U.	Grad School of Education & Psych	Clinical	91	74	81.30%	73.4%	70.9%	71.9%	67.3%	69.3%	74.3%	66.7%	77.7%
	San Diego State U.	Dept of Psych	Clinical	39	36	92.30%	82.0%	80.3%	75.0%	73.1%	77.8%	79.9%	83.0%	78.0%
	Stanford U.	School of Education	Counseling	7	5	71.40%	71.6%	74.2%	75.6%	70.9%	69.9%	74.4%	67.3%	76.4%
	The Fielding Institute	N/A	Clinical	137	91	66.40%	71.0%	66.3%	67.2%	66.2%	64.0%	71.3%	61.1%	75.6%
	The Wright Institute	N/A	Clinical	208	130	62.50%	68.4%	65.5%	69.5%	66.5%	62.5%	70.5%	57.0%	74.4%
	U. of California-Berkeley	Dept of Psych	Clinical	17	17	100.00%	78.9%	83.7%	83.9%	85.5%	80.7%	82.8%	88.5%	84.1%
		Graduate School of Education	School	4	3	75.00%	57.5%	69.9%	82.4%	66.7%	74.1%	68.7%	81.0%	76.9%
	U. of California-Los Angeles	Dept of Psych	Clinical	29	25	86.20%	78.7%	76.9%	74.2%	76.5%	76.6%	79.8%	81.0%	80.5%
	U. of California-Santa Barbara	Dept of Couns Clin & School Psych	Comb Clin/Coun/School Developmental & Evolutionary	5	3	60.00%	54.9%	68.9%	71.4%	66.0%	60.9%	69.2%	64.0%	72.0%
		Dept of Psych		4	3	75.00%	65.8%	84.1%	77.3%	81.7%	68.8%	82.8%	78.0%	85.8%
	U. of La Verne	Psych Dept	Clinical/Community	33	18	54.50%	65.9%	65.0%	67.1%	63.6%	61.5%	69.7%	60.5%	69.4%
	U. of Southern California	Grad Dept of Psych	Clinical	17	16	94.10%	75.5%	80.5%	80.2%	80.6%	77.3%	81.3%	82.6%	79.5%
		School of Ed	Counseling	41	32	78.00%	71.0%	69.4%	75.7%	70.2%	72.3%	75.2%	70.4%	77.4%
<b>CO</b>	Colorado State U.	Dept of Psych	Counseling	33	31	93.90%	78.9%	79.1%	80.1%	76.3%	76.4%	81.9%	81.2%	79.9%
	U. of Colorado	Dept of Psych	Clinical	12	11	91.70%	76.8%	74.2%	73.9%	72.9%	76.2%	78.4%	82.7%	78.9%
	U. of Denver	Dept of Psych	Child Clinical	18	18	100.00%	78.4%	81.8%	83.1%	83.9%	83.4%	82.8%	88.8%	85.8%
		School of Education	Counseling	22	21	95.50%	72.1%	71.8%	73.7%	74.4%	72.4%	72.6%	77.4%	78.5%
			School	6	3	50.00%	65.5%	55.1%	61.8%	67.1%	64.9%	63.3%	60.7%	77.2%

Designated Doctoral Program in Psychology				EPPP Performance			Percent correct by content area							
Jurisdiction	SCHOOL	DEPARTMENT	PROGRAM	NUM	PASS	PASS RATE	Biological Bases of Behavior	Cognitive-Affective Bases of Behav	Social & Multicultural Bases of Behav	Growth & Lifespan Development	Assessment and Diagnosis	Treatment/ Intervention	Research Methods	Ethical/Legal/ Professional Issues
		School of Professional Psych	Clinical	150	124	82.70%	72.9%	73.8%	73.6%	72.0%	69.3%	74.9%	68.4%	80.7%
	U. of Northern Colorado	Dept of Professional Psych	Counseling	21	18	85.70%	68.3%	72.8%	73.5%	76.7%	70.9%	77.9%	73.9%	81.0%
			School	12	10	83.30%	70.4%	71.8%	68.0%	66.5%	67.5%	67.9%	74.4%	80.0%
<b>CT</b>	U. of Connecticut	Dept of Psych	Clinical	28	28	100.00%	80.5%	78.2%	76.4%	75.8%	75.8%	78.2%	83.8%	80.5%
		Educ Psych Dept	School	8	3	37.50%	52.6%	56.5%	61.8%	58.2%	53.6%	59.3%	59.8%	75.0%
	U. of Hartford	Dept of Psych	Clinical	129	91	70.50%	70.4%	67.6%	70.1%	69.1%	65.8%	70.9%	62.8%	78.6%
	Yale U.	Dept of Psych	Clinical	6	6	100.00%	79.5%	84.6%	78.5%	85.9%	89.3%	88.8%	94.0%	85.0%
<b>DC</b>	American U.	Dept of Psych	Clinical	23	23	100.00%	83.4%	88.8%	85.0%	84.5%	87.1%	87.1%	86.8%	84.2%
	Catholic U.	Dept of Psych	Clinical	29	29	100.00%	80.5%	82.9%	82.3%	81.6%	83.2%	83.2%	84.0%	85.8%
	Gallaudet U.	Dept of Psych	Clinical	19	15	78.90%	66.9%	69.5%	70.0%	68.0%	70.1%	66.0%	66.4%	77.3%
	George Washington U.	Center for Prof Psych	Clinical	169	133	78.70%	70.7%	71.3%	72.2%	71.5%	68.8%	72.9%	60.7%	77.9%
		Dept of Psych	Clinical	31	28	90.30%	76.3%	73.7%	74.0%	73.6%	73.8%	76.6%	76.0%	81.1%
	Howard U.	Dept of Psych	Clinical	30	16	53.30%	67.2%	65.0%	65.0%	64.9%	60.8%	65.5%	68.0%	71.0%
		School of Education-Dept of Psychoeducational Studies	Counseling	37	12	32.40%	57.7%	53.0%	56.7%	55.5%	55.5%	56.1%	59.9%	70.0%
			School	4	2	50.00%	82.3%	62.0%	70.0%	70.5%	65.2%	70.4%	58.9%	79.2%
<b>DE</b>	U. of Delaware	Dept of Psych	Clinical	11	11	100.00%	77.3%	86.0%	76.8%	84.3%	85.7%	85.3%	91.5%	84.5%
<b>FL</b>	Argosy U./Tampa	Fla Schl of Prof Psych	Clinical	65	52	80.00%	73.5%	67.9%	71.5%	69.3%	64.7%	73.3%	58.6%	78.4%
	Carlos Albizu U./ Miami	Dept of Psych	Forensic	58	23	39.70%	65.0%	61.1%	60.8%	62.9%	60.5%	61.8%	54.7%	72.6%
			General Clinical	119	55	46.20%	64.8%	61.7%	60.1%	62.6%	58.6%	62.6%	51.9%	71.8%
			Neuropsychology	37	21	56.80%	72.9%	60.7%	63.9%	66.4%	56.5%	61.1%	52.3%	71.7%
	Florida Institute of Technology	School of Psych	Clinical	97	71	73.20%	72.0%	70.0%	70.2%	69.1%	68.9%	72.5%	60.4%	77.3%
	Florida State U.	Dept of Human Services and Studies	Counseling/School	23	22	95.70%	75.5%	77.5%	74.9%	73.5%	74.1%	79.0%	78.5%	80.0%
		Dept of Psych	Clinical	22	20	90.90%	74.9%	77.5%	75.1%	74.7%	79.6%	78.5%	81.4%	80.0%
	Nova Southeastern U.	School of Psych	Clinical	328	257	78.40%	73.3%	70.6%	70.3%	71.0%	68.8%	75.3%	62.8%	77.9%
	U. of Central Florida	Dept of Psych	Clinical	10	8	80.00%	68.3%	67.5%	71.4%	69.9%	62.5%	75.8%	75.0%	74.1%
	U. of Florida	Dept of Clinical & Health Psych	Clinical	47	45	95.70%	81.9%	82.7%	75.7%	77.8%	80.2%	80.9%	84.7%	82.0%

Designated Doctoral Program in Psychology				EPPP Performance			Percent correct by content area							
Jurisdiction	SCHOOL	DEPARTMENT	PROGRAM	NUM	PASS	PASS RATE	Biological Bases of Behavior	Cognitive-Affective Bases of Behav	Social & Multicultural Bases of Behav	Growth & Lifespan Development	Assessment and Diagnosis	Treatment/ Intervention	Research Methods	Ethical/Legal/ Professional Issues
		Dept of Psych	Counseling	19	19	100.00%	78.7%	80.4%	83.4%	77.6%	80.5%	78.9%	84.5%	84.5%
	U. of Miami	Dept of Psych	Behavioral Medicine	3	2	66.70%	83.3%	76.9%	63.9%	64.1%	73.8%	77.6%	76.2%	81.2%
			Clinical	42	42	100.00%	79.6%	80.7%	81.4%	78.6%	80.2%	83.3%	87.4%	81.7%
		School of Education and Allied Professions-Dept of Education	Counseling	18	18	100.00%	74.1%	73.4%	73.3%	75.4%	74.2%	77.5%	74.5%	80.9%
	U. of South Florida	Dept of Psych	Clinical	21	20	95.20%	77.9%	79.5%	77.4%	75.0%	75.8%	80.1%	81.7%	78.1%
<b>GA</b>	Argosy U. - Atlanta Campus	Professional School	Clinical	156	129	82.70%	74.7%	72.9%	72.2%	71.9%	69.7%	77.0%	65.2%	78.7%
	Emory U.	Dept of Psych	Clinical	14	10	71.40%	71.4%	72.7%	71.7%	73.3%	70.1%	79.6%	79.2%	81.1%
		College of Education-Dept of Counseling and Psychological Services	Counseling	14	9	64.30%	65.7%	65.8%	69.0%	67.5%	68.7%	74.7%	64.0%	75.6%
			School	11	10	90.90%	67.9%	70.3%	74.5%	70.4%	70.8%	70.7%	72.2%	72.6%
		Dept of Psych	Clinical	37	33	89.20%	76.1%	77.5%	76.0%	78.9%	75.5%	80.2%	83.6%	81.9%
		College of Education-Dept of Counseling and Human Development	Counseling	33	20	60.60%	63.6%	65.9%	71.3%	66.9%	65.6%	69.3%	61.2%	76.1%
	U. of Georgia	Dept of Educational Psych	School	14	13	92.90%	76.1%	79.6%	75.4%	77.8%	79.6%	75.5%	81.6%	79.0%
		Dept of Psych	Clinical	25	25	100.00%	79.6%	79.5%	80.1%	82.3%	81.1%	85.4%	87.5%	82.6%
<b>HI</b>	Argosy U./Hawaii (ASPP)	N/A	Clinical	132	75	56.80%	66.7%	62.1%	66.9%	63.9%	60.2%	69.1%	51.8%	73.8%
	U. of Hawaii	Dept of Psych	Clinical	14	13	92.90%	79.8%	80.1%	72.9%	78.7%	75.5%	85.8%	83.4%	77.7%
<b>IA</b>	Iowa State U.	Dept of Psych	Counseling	12	9	75.00%	70.0%	72.7%	75.1%	71.7%	72.0%	73.2%	80.4%	80.1%
	U. of Iowa	Dept of Psych	Clinical	12	11	91.70%	77.4%	84.5%	77.9%	81.0%	84.0%	86.2%	85.8%	80.3%
		Div Psych & Quantitative Foundations	Counseling	15	15	100.00%	77.6%	79.2%	80.5%	80.8%	78.2%	82.3%	78.9%	84.4%
			School	15	9	60.00%	63.5%	64.8%	64.1%	67.1%	65.9%	68.8%	57.5%	73.0%
<b>ID</b>	Idaho State U.	Dept of Psych	Clinical	21	21	100.00%	75.9%	82.5%	78.3%	76.4%	77.0%	81.1%	84.4%	81.1%
<b>IL</b>	Adler School of Professional Psych	N/A	Clinical	126	70	55.60%	67.2%	65.6%	66.0%	66.0%	62.0%	68.8%	54.0%	75.9%
	Argosy U. - Chicago Campus	N/A	Clinical	269	189	70.30%	69.6%	68.6%	69.9%	69.2%	65.5%	72.3%	59.6%	75.6%

Designated Doctoral Program in Psychology				EPPP Performance			Percent correct by content area							
Jurisdiction	SCHOOL	DEPARTMENT	PROGRAM	NUM	PASS	PASS RATE	Biological Bases of Behavior	Cognitive-Affective Bases of Behav	Social & Multicultural Bases of Behav	Growth & Lifespan Development	Assessment and Diagnosis	Treatment/ Intervention	Research Methods	Ethical/Legal/ Professional Issues
	Chicago School of Professional Psychology	Psychology	Clinical	6	5	83.30%	71.5%	74.9%	69.3%	68.8%	69.6%	71.7%	53.6%	83.3%
	DePaul U.	Dept of Psych	Clinical	31	26	83.90%	74.1%	72.9%	76.1%	77.3%	75.4%	78.1%	77.2%	79.0%
	Illinois Institute of Tech	Dept of Psych	Clinical	41	38	92.70%	79.2%	75.9%	73.3%	75.8%	75.7%	77.9%	76.9%	82.1%
	Illinois School of Professional Psych	Chicago Campus	Clinical	334	230	68.90%	69.2%	67.4%	69.5%	69.4%	64.2%	73.3%	57.0%	77.2%
		Chicago Nothwest Campus	Clinical	107	59	55.10%	65.9%	60.0%	64.9%	66.0%	60.3%	68.8%	52.0%	71.6%
	Illinois State U.	Dept of Psych	School	9	8	88.90%	69.1%	72.5%	69.3%	77.5%	62.3%	78.1%	67.5%	74.1%
	Loyola U. of Chicago	Dept of Psych	Clinical	17	16	94.10%	77.6%	78.4%	76.7%	78.1%	79.9%	82.8%	82.3%	83.0%
		School of Education-Dept of Counseling and Educational Psych	Counseling	25	18	72.00%	66.9%	66.0%	67.8%	68.2%	64.7%	69.8%	64.2%	76.8%
			School	5	4	80.00%	62.3%	59.8%	70.2%	66.9%	70.9%	67.6%	62.6%	73.8%
	Northern Illinois U.	Dept of Psych	Clinical	16	15	93.80%	73.6%	81.6%	80.0%	79.5%	80.1%	78.0%	84.3%	83.0%
	Northwestern U.	Dept of Psych	Clinical	10	10	100.00%	78.1%	87.4%	86.7%	79.5%	85.5%	88.3%	87.0%	80.7%
		Med School/Division Psych	Clinical	22	21	95.50%	81.4%	80.2%	80.0%	80.9%	79.9%	79.5%	81.4%	83.4%
	Roosevelt U.	Dept of Psych	Clinical	16	14	87.50%	76.0%	66.8%	72.7%	74.3%	70.6%	74.3%	68.6%	78.9%
	Rosalind Franklin U. of Medicine & Science	Dept of Psych	Clinical	38	36	94.70%	83.5%	78.0%	77.9%	77.6%	76.1%	79.7%	80.6%	78.6%
	Southern Illinois U.- Carbondale	Dept of Psych	Clinical	25	21	84.00%	71.7%	72.9%	69.2%	71.3%	71.7%	76.2%	73.1%	78.5%
			Counseling	22	18	81.80%	72.3%	73.0%	81.2%	70.8%	72.0%	76.0%	76.7%	79.9%
	U. of Chicago	Dept of Psych	Developmental	4	3	75.00%	62.1%	66.3%	74.0%	69.7%	69.6%	76.8%	57.1%	81.7%
			Human Development	3	2	66.70%	79.2%	73.8%	76.9%	76.9%	74.8%	83.0%	83.0%	86.5%
			Mental Health Research	3	3	100.00%	78.8%	80.8%	80.6%	70.5%	75.0%	83.2%	85.7%	77.0%
	U. of Illinois-Champaign-Urbana	College of Education	Counseling	15	14	93.30%	72.6%	76.6%	80.0%	73.7%	80.3%	78.8%	82.8%	81.2%
		Dept of Psych	Clinical	21	20	95.20%	75.0%	80.5%	81.1%	79.6%	81.8%	83.1%	85.5%	81.9%
	U. of Illinois-Chicago	Dept of Psych	Biopsychology	3	0		63.6%	52.6%	55.6%	41.0%	42.9%	52.8%	42.9%	67.0%
			Clinical	15	14	93.30%	76.2%	75.1%	77.2%	80.1%	75.4%	82.7%	83.8%	81.3%

Designated Doctoral Program in Psychology				EPPP Performance			Percent correct by content area							
Jurisdiction	SCHOOL	DEPARTMENT	PROGRAM	NUM	PASS	PASS RATE	Biological Bases of Behavior	Cognitive-Affective Bases of Behavior	Social & Multicultural Bases of Behavior	Growth & Lifespan Development	Assessment and Diagnosis	Treatment/ Intervention	Research Methods	Ethical/Legal/ Professional Issues
	Wheaton College	Dept of Psych	Clinical	62	46	74.20%	67.2%	67.6%	69.5%	69.7%	66.6%	72.2%	65.8%	78.6%
IN	Ball State U.	Dept of Counseling Psych	Counseling	25	19	76.00%	71.0%	73.5%	72.6%	70.2%	73.5%	77.2%	77.0%	81.3%
		Teachers College	School	15	13	86.70%	73.6%	73.7%	69.8%	73.5%	76.0%	71.7%	72.5%	80.5%
	Indiana State U.	Dept of Counseling	Counseling	31	23	74.20%	65.1%	64.6%	70.3%	66.2%	66.6%	73.5%	61.5%	77.2%
		Dept of Psych	Clinical	26	25	96.20%	78.6%	78.7%	79.4%	75.7%	79.6%	83.8%	78.5%	80.1%
		School of Education	School	5	5	100.00%	67.2%	75.9%	73.0%	66.1%	63.6%	73.1%	73.3%	76.0%
	Indiana U.	Dept of Psych	Clinical	7	7	100.00%	75.2%	81.7%	80.4%	76.9%	82.1%	88.6%	90.5%	79.0%
		School of Education-Dept of Counseling and Educational Psyc	Counseling	18	18	100.00%	67.7%	74.5%	78.0%	80.8%	74.5%	78.3%	72.9%	82.2%
			School	9	5	55.60%	68.1%	68.7%	63.9%	68.9%	67.3%	72.5%	62.4%	80.1%
	Indiana U. Purdue U. Indianapolis	Dept of Psychology	Clinical Rehabilitation	12	11	91.70%	82.0%	76.5%	74.8%	73.8%	76.3%	79.7%	78.2%	76.8%
	Purdue U.	Dept of Educ Studies	Counseling	11	9	81.80%	64.7%	65.6%	73.4%	63.4%	64.0%	68.8%	67.5%	78.2%
		Dept of Psychological Science	Clinical	9	9	100.00%	77.7%	83.2%	81.2%	83.4%	80.2%	85.2%	91.5%	82.3%
	U. of Indianapolis	Dept of Psych	Clinical	37	35	94.60%	79.3%	75.1%	78.1%	74.5%	73.9%	78.4%	67.7%	80.5%
	U. of Notre Dame	Dept of Psych	Counseling	16	15	93.80%	74.0%	80.2%	80.6%	78.0%	77.5%	74.2%	83.9%	78.6%
KS	U. of Kansas	Dept of Counseling Psych	Counseling	5	5	100.00%	76.7%	72.8%	79.1%	75.5%	82.1%	81.9%	84.3%	83.5%
		Dept of Psych	Child-Clinical	23	22	95.70%	73.1%	79.0%	73.8%	77.6%	73.4%	78.2%	82.9%	78.8%
			Clinical	26	26	100.00%	81.3%	84.7%	81.5%	81.0%	81.1%	81.7%	85.8%	84.4%
		Dept of Psych and Research in Education	Counseling	14	13	92.90%	70.7%	72.5%	81.1%	69.7%	76.0%	76.3%	73.7%	80.3%
			School	4	3	75.00%	66.1%	70.7%	71.0%	77.1%	80.4%	64.1%	78.6%	79.7%
	Wichita State U.	Dept of Psych	Community-Clinical	23	14	60.90%	69.2%	64.5%	65.1%	59.0%	66.6%	69.3%	65.2%	74.1%
KY	Spalding U.	Dept of Psych	Clinical	93	56	60.20%	66.5%	62.8%	64.7%	66.5%	61.5%	68.2%	54.8%	74.5%
	U. of Kentucky	College of Education	Counseling	34	22	64.70%	61.4%	61.9%	68.2%	64.3%	64.1%	71.6%	62.7%	74.1%
			School	9	6	66.70%	60.1%	69.5%	62.5%	65.5%	63.9%	66.9%	61.9%	73.7%
		Dept of Psych	Clinical	14	11	78.60%	74.1%	77.7%	76.8%	73.5%	80.6%	79.7%	85.2%	81.1%
	U. of Louisville	Dept of Educ & Couns Psych	Counseling	33	18	54.50%	61.0%	58.8%	60.6%	61.5%	59.6%	66.2%	57.1%	74.2%
		Dept of Psych	Clinical	21	19	90.50%	72.2%	74.5%	74.7%	72.6%	73.3%	77.6%	81.3%	78.5%
LA	Louisiana State U.	Dept of Psych	Clinical	31	30	96.80%	80.3%	80.4%	77.6%	76.1%	80.1%	80.5%	83.0%	81.8%
			School	11	11	100.00%	77.4%	79.1%	77.6%	76.3%	79.2%	79.6%	83.7%	77.3%
	Louisiana Tech U.	Dept of Psych & Behav Sci	Counseling	13	9	69.20%	73.1%	73.1%	69.5%	72.2%	67.6%	75.6%	71.0%	72.7%

Designated Doctoral Program in Psychology				EPPP Performance			Percent correct by content area							
Jurisdiction	SCHOOL	DEPARTMENT	PROGRAM	NUM	PASS	PASS RATE	Biological Bases of Behavior	Cognitive-Affective Bases of Behavior	Social & Multicultural Bases of Behavior	Growth & Lifespan Development	Assessment and Diagnosis	Treatment/Intervention	Research Methods	Ethical/Legal/Professional Issues
	Tulane U.	Dept of Psych	School	10	8	80.00%	77.5%	79.4%	75.4%	82.5%	77.9%	77.2%	81.0%	78.1%
	U. of New Orleans	Dept of Psych	Applied Developmental	3	3	100.00%	86.6%	82.1%	76.4%	87.2%	83.3%	79.9%	78.6%	83.3%
<b>MA</b>	Boston College	School of Education-Division of Counseling Psych	Counseling	31	28	90.30%	70.1%	71.2%	77.1%	72.2%	71.5%	77.6%	73.8%	78.7%
	Boston U.	Dept of Developmental Studies & Counseling	Counseling	4	4	100.00%	69.3%	77.9%	74.0%	70.2%	76.8%	77.5%	73.2%	83.3%
		Dept of Psych	Clinical	30	27	90.00%	79.6%	80.1%	77.1%	78.9%	77.7%	79.7%	84.1%	83.6%
	Clark U.	Dept of Psych	Clinical	15	15	100.00%	79.1%	81.9%	83.2%	84.4%	79.5%	86.6%	85.3%	85.7%
	Mass. School of Prof. Psychology	N/A	Clinical	134	104	77.60%	70.4%	70.5%	73.1%	72.7%	67.7%	75.9%	60.9%	79.2%
	Northeastern U.	Dept of Counseling Psych Rehab and Special Ed	Counseling/School	25	17	68.00%	67.9%	66.6%	69.1%	72.8%	67.2%	71.0%	64.0%	78.6%
	Suffolk U.	Dept of Psych	Clinical-Developmental	32	29	90.60%	76.6%	73.4%	74.5%	76.2%	70.5%	78.0%	75.2%	79.0%
	U. of Mass-Amherst & Boston	Dept of Psych	Clinical	60	53	88.30%	76.4%	77.7%	77.7%	79.1%	74.0%	79.6%	81.2%	78.6%
<b>MB</b>	U. of Manitoba	Dept of Psych	Clinical	16	12	75.00%	69.3%	74.0%	69.9%	72.6%	69.1%	73.3%	75.4%	77.0%
<b>MD</b>	Loyola College in Maryland	Dept of Psych	Clinical	44	39	88.60%	80.1%	73.7%	74.7%	73.0%	72.5%	77.9%	71.0%	78.2%
	U. of Maryland-Baltimore County	Dept of Psych	Clinical	16	15	93.80%	74.5%	73.4%	75.5%	72.4%	80.6%	79.7%	87.6%	79.9%
			Human Services	10	8	80.00%	76.9%	75.7%	74.6%	79.7%	80.0%	81.0%	70.6%	76.1%
	U. of Maryland-College Park	College of Education	School	4	4	100.00%	78.5%	79.7%	82.3%	78.8%	80.7%	71.6%	77.7%	86.0%
		Dept of Psych	Clinical	20	19	95.00%	79.9%	79.2%	77.2%	73.9%	77.0%	76.6%	83.8%	78.2%
			Counseling	13	12	92.30%	73.7%	76.0%	81.1%	78.9%	76.0%	78.3%	81.6%	81.6%
		Dept of Psych & Counseling	Counseling	9	9	100.00%	78.6%	78.5%	86.5%	74.7%	75.4%	80.8%	80.2%	80.8%
	Uniformed Services U. of the Health Sciences	Dept of Med Psych	Clinical	7	7	100.00%	76.0%	80.2%	78.4%	78.0%	73.5%	81.1%	79.6%	82.9%
<b>ME</b>	U. of Maine	Dept of Psych	Clinical	10	10	100.00%	80.5%	83.7%	80.4%	85.4%	81.1%	81.5%	85.6%	82.4%
			Developmental/Clinical	8	8	100.00%	76.9%	85.9%	78.6%	87.0%	81.5%	80.4%	85.4%	87.2%

Designated Doctoral Program in Psychology				EPPP Performance			Percent correct by content area							
Jurisdiction	SCHOOL	DEPARTMENT	PROGRAM	NUM	PASS	PASS RATE	Biological Bases of Behavior	Cognitive-Affective Bases of Behavior	Social & Multicultural Bases of Behavior	Growth & Lifespan Development	Assessment and Diagnosis	Treatment/Intervention	Research Methods	Ethical/Legal/Professional Issues
MI	Andrews U.	N/A	Counseling	7	4	57.10%	63.0%	62.6%	63.1%	67.0%	60.2%	70.6%	56.1%	81.7%
	Central Michigan U.	Dept of Psych	Clinical	30	29	96.70%	77.8%	77.2%	74.1%	78.6%	79.4%	79.3%	77.1%	83.0%
	Michigan State U.	College of Education	Counseling	28	20	71.40%	69.7%	70.3%	74.3%	71.0%	68.0%	74.4%	75.1%	79.2%
			School	7	4	57.10%	59.2%	58.3%	64.1%	69.8%	61.2%	64.3%	58.2%	74.8%
		Dept of Psych	Clinical	32	31	96.90%	82.7%	84.0%	80.5%	81.9%	81.3%	81.6%	85.0%	86.1%
	U. of Detroit Mercy	Dept of Psych	Clinical	30	19	63.30%	70.9%	70.0%	69.9%	69.5%	65.3%	71.6%	65.0%	76.6%
	U. of Michigan	Dept of Psych	Clinical	28	26	92.90%	76.8%	78.7%	78.5%	76.3%	75.9%	79.8%	79.0%	82.3%
	Wayne State U.	College of Education-Division of Theoretical & Behavioral Studies	Educational	25	17	68.00%	70.0%	68.2%	63.7%	65.3%	71.5%	69.6%	66.2%	76.9%
		Dept of Psych	Clinical	32	32	100.00%	82.9%	81.9%	80.5%	81.4%	82.2%	82.8%	85.2%	83.3%
		Western Michigan U.	College of Education-Dept of Counselor Ed & Counseling Psych	Counseling	27	21	77.80%	66.6%	67.4%	71.8%	70.3%	67.7%	70.9%	67.3%
		Dept of Psych	Applied Behavioral Analysis	3	1	33.30%	60.6%	69.2%	69.4%	59.0%	60.7%	70.0%	45.2%	72.2%
			Clinical	18	17	94.40%	72.0%	76.8%	77.3%	74.6%	77.6%	82.7%	86.9%	83.9%
MN	Argosy U/Twin Cities (MSPP)	N/A	Clinical	167	126	75.40%	70.7%	67.7%	70.8%	69.5%	67.7%	74.0%	61.3%	77.9%
	U. of Minnesota	College of Education	Child	10	10	100.00%	83.7%	88.6%	79.6%	90.4%	90.4%	85.0%	86.2%	85.1%
		Dept of Educational Psych	Counseling	19	14	73.70%	69.1%	69.6%	72.8%	68.6%	71.1%	75.7%	75.8%	73.9%
			School	8	5	62.50%	74.4%	70.9%	75.6%	72.8%	70.7%	73.3%	66.0%	76.3%
		Dept of Psych	Clinical	15	14	93.30%	81.5%	83.2%	79.1%	80.6%	86.2%	82.1%	83.3%	81.4%
			Counseling	9	8	88.90%	76.1%	78.5%	83.7%	76.7%	82.1%	80.2%	82.9%	78.1%
	U. of St. Thomas	Dept of Professional Psychology	Counseling	92	51	55.40%	62.6%	62.4%	66.5%	65.3%	62.1%	70.2%	55.3%	75.4%
MO	Forest Institute of Professional Psych	N/A	Clinical	272	132	48.50%	65.1%	60.3%	63.3%	62.8%	59.0%	66.6%	50.8%	74.7%
	St Louis U.	Dept of Psych	Clinical	20	19	95.00%	76.4%	75.9%	75.5%	75.3%	77.8%	78.3%	75.3%	81.5%
	U. of Missouri- Columbia	Dept of Psych	Clinical	7	7	100.00%	78.0%	80.5%	79.8%	82.4%	79.8%	82.5%	88.8%	83.8%
		Dept of Psych and Educational and Counseling Psych	Counseling	30	25	83.30%	65.1%	72.7%	77.9%	69.3%	73.6%	74.6%	75.8%	80.1%
			School	5	3	60.00%	67.5%	75.2%	70.0%	71.9%	75.0%	74.2%	78.6%	78.7%

Designated Doctoral Program in Psychology				EPPP Performance			Percent correct by content area							
Jurisdiction	SCHOOL	DEPARTMENT	PROGRAM	NUM	PASS	PASS RATE	Biological Bases of Behavior	Cognitive-Affective Bases of Behav	Social & Multicultural Bases of Behav	Growth & Lifespan Development	Assessment and Diagnosis	Treatment/ Intervention	Research Methods	Ethical/Legal/ Professional Issues
	U. of Missouri- KC	School of Education	Counseling	17	15	88.20%	73.1%	73.7%	76.6%	72.0%	70.5%	77.2%	82.8%	79.4%
	U. of Missouri- St Louis	Dept of Psych	Clinical	22	22	100.00%	80.3%	83.5%	83.4%	81.9%	81.7%	84.1%	86.8%	84.4%
	U. of Missouri-KC	Dept of Psych	Clinical Health	4	3	75.00%	80.4%	78.7%	66.7%	64.0%	75.0%	77.0%	75.0%	75.0%
	Washington U.	Dept of Psych	Clinical	9	8	88.90%	80.5%	78.3%	70.5%	76.1%	75.8%	78.2%	72.4%	79.7%
<b>MS</b>	Jackson State U.	Dept of Psych	Clinical	20	13	65.00%	68.6%	70.4%	65.6%	67.0%	66.4%	69.8%	67.9%	77.1%
	Mississippi State U.	Dept of Counselor Education & Educational Psych	School	6	4	66.70%	53.1%	64.7%	66.0%	70.8%	63.3%	67.2%	59.7%	74.4%
	U. of Mississippi	Dept of Psych	Clinical	25	23	92.00%	76.9%	74.8%	73.9%	75.9%	73.7%	77.6%	78.1%	80.2%
	U. of Southern Mississippi	Dept of Psych	Clinical	17	15	88.20%	85.3%	79.2%	73.7%	75.2%	78.9%	78.8%	81.7%	79.8%
			Counseling	17	16	94.10%	79.1%	75.6%	79.7%	77.2%	80.5%	79.0%	79.0%	83.5%
			School	13	7	53.80%	61.2%	65.0%	60.1%	59.2%	66.5%	63.9%	63.2%	71.1%
<b>MT</b>	U. of Montana	Dept of Psych	Clinical	15	14	93.30%	84.5%	78.7%	77.9%	79.4%	71.3%	81.0%	75.1%	80.5%
<b>NB</b>	U. of New Brunswick	Dept of Psych	Clinical	8	8	100.00%	80.4%	83.5%	79.3%	84.7%	70.1%	83.4%	81.0%	80.8%
			General	3	1	33.30%	68.0%	51.0%	55.6%	51.3%	69.0%	66.4%	50.7%	66.7%
<b>NC</b>	Duke U.	Dept of Psych - Social&Health Science	Clinical	12	11	91.70%	79.5%	80.2%	84.1%	83.4%	80.1%	83.2%	88.6%	82.8%
	North Carolina State U.	Dept of Psych	School	9	8	88.90%	66.0%	74.9%	71.8%	72.9%	69.0%	69.9%	73.3%	72.4%
	U. of North Carolina- Chapel Hill	Dept of Psych	Clinical	21	21	100.00%	82.3%	84.7%	83.3%	81.7%	82.1%	84.2%	91.4%	87.5%
		School of Education	School	17	14	82.40%	72.7%	68.5%	70.1%	74.5%	68.7%	73.9%	70.3%	78.5%
	U. of North Carolina- Greensboro	Dept of Psych	Clinical	26	26	100.00%	77.0%	80.7%	75.3%	82.1%	77.7%	81.6%	86.7%	82.9%
<b>ND</b>	U. of North Dakota	Dept of Counseling	Counseling	33	25	75.80%	67.7%	63.1%	71.0%	68.8%	66.8%	70.5%	67.9%	78.1%
		Dept of Psych	Clinical	23	16	69.60%	72.7%	72.1%	68.7%	68.0%	69.3%	69.7%	72.7%	77.1%
<b>NE</b>	U. of Nebraska- Lincoln	Dept of Psych	Clinical	35	31	88.60%	74.3%	76.8%	75.2%	75.4%	72.9%	77.5%	75.9%	81.3%
		Teachers College	Counseling	14	9	64.30%	65.8%	65.0%	68.1%	61.1%	63.5%	67.1%	66.7%	74.0%
			School	21	18	85.70%	65.2%	70.3%	72.5%	69.7%	66.7%	76.2%	75.1%	75.7%
<b>NH</b>	Antioch/New England Graduate School	Dept of Clinical Psych	Clinical	98	71	72.40%	69.6%	66.7%	69.9%	69.1%	65.5%	73.5%	60.6%	77.0%

Designated Doctoral Program in Psychology				EPPP Performance			Percent correct by content area							
Jurisdiction	SCHOOL	DEPARTMENT	PROGRAM	NUM	PASS	PASS RATE	Biological Bases of Behavior	Cognitive-Affective Bases of Behavior	Social & Multicultural Bases of Behavior	Growth & Lifespan Development	Assessment and Diagnosis	Treatment/ Intervention	Research Methods	Ethical/Legal/ Professional Issues
NJ	Fairleigh Dickinson U. Teaneck-Hackensack	Dept of Psych	Clinical	62	55	88.70%	77.5%	76.1%	74.3%	74.6%	76.1%	75.3%	75.8%	81.3%
	Rutgers U.-New Brunswick	Grad School - New Brunswick	Clinical	22	21	95.50%	80.8%	86.1%	83.3%	85.3%	83.3%	88.3%	88.3%	85.3%
		Grad School of Applied & Professional Psych	Clinical	48	46	95.80%	74.6%	77.6%	78.1%	80.0%	76.2%	78.9%	72.9%	82.7%
			School	16	14	87.50%	70.7%	71.9%	69.7%	71.6%	72.3%	72.8%	65.7%	77.8%
		Grad School of Education -Dept of Educational Psych	Counseling	20	15	75.00%	67.8%	69.7%	71.3%	71.5%	66.6%	71.2%	62.1%	77.3%
	Rutgers U.-New brunswick	Grad School of Applied & Professional Psych	Organizational	5	5	100.00%	77.5%	80.2%	85.9%	87.7%	83.6%	82.2%	83.6%	87.3%
	Seton Hall U.	Dept of Professional Psych and Family Therapy	Clinical	14	9	64.30%	69.4%	66.9%	64.2%	72.1%	62.3%	61.4%	59.4%	75.4%
			Counseling	22	16	72.70%	74.4%	69.6%	71.9%	69.8%	67.8%	72.4%	63.7%	76.3%
NM	New Mexico State U.	College of Education - Dept of Counseling and Educational Psych	Counseling	22	13	59.10%	62.2%	60.1%	68.7%	64.4%	57.9%	69.3%	59.2%	75.7%
	U. of New Mexico	Dept of Psych	Clinical	13	13	100.00%	80.3%	83.4%	77.3%	78.8%	78.8%	81.2%	82.3%	85.6%
NS	Dalhousie U.	Dept of Psych	Clinical	18	16	88.90%	81.6%	80.7%	76.1%	74.8%	76.8%	81.4%	81.7%	79.9%
NV	U. of Nevada-Las Vegas	Dept of Psych	Clinical	13	7	53.80%	66.6%	69.6%	64.9%	62.5%	63.7%	69.8%	66.5%	78.5%
	U. of Nevada-Reno	Dept of Psych	Clinical	27	25	92.60%	73.4%	76.9%	78.1%	73.9%	78.2%	82.6%	77.9%	79.3%
NY	Adelphi U.	The Derner Institute	Clinical	110	91	82.70%	73.0%	72.2%	74.2%	73.7%	69.7%	73.5%	67.1%	78.7%
	Alfred U.	Col. of Engineering & Prof. Studies	School	13	10	76.90%	71.4%	69.6%	68.1%	68.2%	67.9%	72.5%	73.4%	81.6%
	CUNY City College	Dept of Psych	Clinical	14	12	85.70%	71.1%	69.1%	73.5%	73.3%	68.9%	72.0%	64.7%	77.9%
	CUNY Grad School & U. Center	Dept of Psych	Clinical	27	23	85.20%	72.3%	72.1%	71.1%	73.0%	67.4%	70.6%	71.2%	76.4%
			Environmental	3	1	33.30%	53.6%	47.8%	56.0%	57.5%	54.8%	61.8%	37.7%	65.6%
			Neurological	3	2	66.70%	73.6%	68.4%	62.5%	60.3%	70.7%	62.5%	58.3%	70.0%
			School	8	7	87.50%	74.1%	81.6%	83.2%	83.3%	77.2%	83.8%	84.8%	81.3%
	CUNY Hunter College	Dept of Psych	Biopsychology	4	3	75.00%	78.7%	67.2%	60.4%	72.7%	59.9%	65.8%	77.4%	73.3%
	CUNY Queens College	Dept of Psych	Neuropsychology	10	10	100.00%	81.7%	80.9%	75.2%	79.8%	76.6%	76.8%	81.9%	80.1%

Designated Doctoral Program in Psychology				EPPP Performance			Percent correct by content area							
Jurisdiction	SCHOOL	DEPARTMENT	PROGRAM	NUM	PASS	PASS RATE	Biological Bases of Behavior	Cognitive-Affective Bases of Behavior	Social & Multicultural Bases of Behavior	Growth & Lifespan Development	Assessment and Diagnosis	Treatment/ Intervention	Research Methods	Ethical/Legal/ Professional Issues
	Columbia U. Teachers College	Dept of Counseling and Clinical Psych	Clinical	37	33	89.20%	79.2%	74.7%	79.3%	74.6%	76.1%	78.3%	81.0%	82.1%
			Counseling	24	21	87.50%	70.0%	68.9%	74.2%	71.9%	67.2%	72.6%	64.6%	80.5%
		Dept of Health & Behavior Studies - Applied Educational Psych	School	12	12	100.00%	72.0%	81.1%	72.3%	78.9%	76.5%	78.0%	81.9%	77.0%
		Dept of Human Development	Developmental	3	1	33.30%	67.0%	59.0%	54.2%	56.4%	65.5%	56.8%	61.9%	65.9%
	Fordham U.	Dept of Psych	Clinical	56	52	92.90%	79.3%	78.3%	77.3%	79.0%	76.3%	80.2%	81.7%	80.6%
			Developmental	12	10	83.30%	72.8%	69.6%	70.1%	73.6%	65.8%	66.7%	72.5%	78.5%
		School of Education-Division of Psych & Educational Srvc	Counseling	26	23	88.50%	75.9%	73.1%	79.6%	77.5%	78.0%	76.7%	80.7%	82.5%
			School	8	6	75.00%	61.4%	70.0%	65.1%	69.4%	64.3%	67.6%	73.2%	71.9%
	Hofstra U.	Dept of Psych	Clinical-School	86	70	81.40%	71.5%	74.5%	72.5%	74.1%	72.6%	75.7%	72.6%	79.2%
	Long Island U.	Dept of Psych	Clinical(Brooklyn Campus)	38	34	89.50%	75.3%	78.1%	78.1%	77.7%	72.9%	76.9%	73.3%	81.0%
			Clinical(CW Post Campus)	48	41	85.40%	73.3%	72.0%	73.9%	73.8%	72.6%	75.8%	71.9%	78.0%
	New York U.	Grad School of Arts & Sci - Dept of Psych	Clinical	11	8	72.70%	81.4%	78.3%	71.6%	74.7%	73.7%	74.0%	77.8%	80.7%
		School of Ed - Dept of Applied Psych	Counseling	22	18	81.80%	72.1%	71.1%	76.1%	76.0%	67.7%	74.8%	69.4%	80.0%
			School	36	29	80.60%	71.8%	72.4%	72.5%	74.1%	72.5%	73.7%	66.8%	80.2%
	Pace U.	Dept of Psych	School	77	52	67.50%	67.1%	67.8%	66.9%	72.1%	67.4%	69.2%	68.2%	77.7%
	St John's U.	Dept of Psych	Clinical	60	56	93.30%	79.4%	76.8%	77.0%	78.3%	77.7%	80.9%	81.1%	82.9%
			School	7	2	28.60%	53.0%	59.1%	60.7%	58.6%	57.7%	61.9%	62.2%	64.8%
	State U. of NY at Albany	Dept of Educational Psych & Statistics	School	16	13	81.30%	69.9%	66.8%	68.7%	72.9%	75.9%	70.2%	74.5%	77.6%
		Dept of Psych	Clinical	30	28	93.30%	77.1%	81.9%	75.0%	76.9%	77.8%	82.5%	85.5%	83.0%
		School of Ed-Dept of Counseling Psych	Counseling	39	33	84.60%	74.3%	74.4%	76.2%	75.2%	73.9%	77.6%	77.3%	79.7%
	State U. of NY at Binghamton	Dept of Psych	Clinical	25	25	100.00%	81.2%	84.4%	80.6%	79.0%	81.1%	81.7%	84.8%	81.9%
	State U. of NY at Buffalo	Dept of Counseling & Educational Psych	Counseling	36	25	69.40%	72.2%	69.9%	70.3%	71.4%	70.2%	74.4%	71.8%	80.6%

Designated Doctoral Program in Psychology				EPPP Performance			Percent correct by content area							
Jurisdiction	SCHOOL	DEPARTMENT	PROGRAM	NUM	PASS	PASS RATE	Biological Bases of Behavior	Cognitive-Affective Bases of Behavior	Social & Multicultural Bases of Behavior	Growth & Lifespan Development	Assessment and Diagnosis	Treatment/ Intervention	Research Methods	Ethical/Legal/ Professional Issues
			School	6	6	100.00%	75.5%	81.1%	79.7%	80.9%	76.5%	77.2%	76.6%	81.7%
		Dept of Psych	Clinical	10	9	90.00%	72.5%	76.9%	73.6%	78.2%	77.1%	77.1%	84.9%	78.8%
	State U. of NY at Stony Brook	Dept of Psych	Clinical	19	17	89.50%	76.6%	80.9%	75.7%	77.4%	79.6%	83.0%	84.9%	78.9%
	Syracuse U.	Dept of Psych	Clinical	7	7	100.00%	80.7%	79.9%	75.7%	78.0%	77.7%	86.6%	81.3%	82.4%
			School	6	4	66.70%	67.6%	67.7%	64.4%	56.1%	64.3%	58.6%	72.6%	82.3%
	The New School	Dept of Psych	Clinical	45	39	86.70%	78.0%	77.8%	75.4%	74.4%	76.6%	77.4%	75.5%	80.5%
	U. of Rochester	Dept of Psych	Clinical	10	10	100.00%	79.0%	85.3%	80.8%	82.6%	79.6%	83.4%	87.1%	78.2%
	Yeshiva U.	Ferkauf Graduate School of Psych	Clinical	103	84	81.60%	74.0%	72.8%	73.7%	73.1%	70.7%	73.8%	66.5%	77.8%
			Developmental	10	4	40.00%	54.5%	59.5%	59.9%	67.7%	53.2%	59.6%	58.7%	64.7%
			Health	45	33	73.30%	72.8%	69.5%	68.4%	72.7%	65.5%	75.1%	69.6%	75.6%
			School	81	56	69.10%	68.8%	69.1%	69.2%	69.6%	66.3%	68.6%	62.9%	75.5%
<b>OH</b>	Bowling Green State U.	Dept of Psych	Clinical	36	34	94.40%	74.4%	78.0%	75.3%	74.3%	79.2%	80.8%	83.4%	81.1%
	Case Western Reserve U.	Dept of Psych	Clinical	19	19	100.00%	80.0%	81.5%	81.8%	81.9%	85.2%	83.4%	85.0%	81.7%
	Kent State U.	College of Education	School	4	3	75.00%	61.6%	71.0%	70.6%	78.0%	70.5%	70.6%	76.8%	74.4%
		Dept of Psych	Clinical	35	34	97.10%	76.1%	77.5%	76.7%	79.8%	77.1%	80.4%	79.7%	80.6%
	Miami U.	Dept of Psych	Clinical	16	15	93.80%	77.4%	81.1%	82.7%	82.8%	80.5%	84.4%	84.4%	82.2%
	Ohio State U.	Dept of Psych	Clinical	23	23	100.00%	79.1%	88.1%	78.6%	81.7%	82.6%	83.9%	90.4%	81.8%
			Counseling	26	25	96.20%	74.8%	82.8%	82.5%	81.2%	80.0%	82.3%	81.0%	80.5%
			Mental/Retardation/ Developmental Disability	5	3	60.00%	61.4%	64.0%	63.9%	67.0%	60.0%	69.9%	61.9%	68.8%
	Ohio U.	Dept of Psych	Clinical	22	22	100.00%	74.1%	81.6%	79.7%	79.0%	78.1%	84.9%	84.8%	83.0%
	U. of Akron	Dept of Psych	Counseling	11	10	90.90%	74.6%	84.6%	83.5%	80.6%	83.9%	84.4%	81.2%	85.8%
		Dept of Psych & Counseling	Counseling	19	15	78.90%	72.5%	76.3%	74.5%	73.1%	69.4%	74.4%	75.3%	79.8%
	U. of Cincinnati	Dept of Psych	Clinical	30	27	90.00%	75.0%	75.9%	78.2%	74.4%	78.0%	76.2%	80.6%	82.7%
			Neuropsychology	6	5	83.30%	82.1%	71.3%	75.3%	66.7%	75.6%	78.0%	81.5%	81.1%
	U. of Toledo	Dept of Psych	Clinical	22	21	95.50%	80.2%	78.8%	80.9%	78.8%	77.9%	83.7%	81.7%	83.7%
	Wright State U.	School of Professional Psych	Clinical	101	79	78.20%	71.6%	73.0%	74.1%	71.7%	71.1%	76.2%	64.6%	77.9%
	Xavier U.	Dept of Psych	Clinical	70	59	84.30%	72.3%	74.9%	71.0%	72.6%	71.8%	76.0%	69.5%	80.4%

Designated Doctoral Program in Psychology				EPPP Performance			Percent correct by content area								
Jurisdiction	SCHOOL	DEPARTMENT	PROGRAM	NUM	PASS	PASS RATE	Biological Bases of Behavior	Cognitive-Affective Bases of Behavior	Social & Multicultural Bases of Behavior	Growth & Lifespan Development	Assessment and Diagnosis	Treatment/ Intervention	Research Methods	Ethical/Legal/ Professional Issues	
OK	Oklahoma State U.	College of Education	Counseling	35	17	48.60%	65.8%	59.6%	65.3%	60.8%	59.0%	69.8%	60.1%	76.4%	
			School	8	7	87.50%	67.7%	65.0%	64.7%	75.6%	67.4%	72.4%	71.9%	72.5%	
		Dept of Psych	Clinical	26	24	92.30%	73.9%	76.0%	75.7%	74.8%	72.3%	76.7%	79.3%	78.9%	
		U. of Oklahoma	Dept of Educational Psych	Counseling	24	21	87.50%	67.7%	70.4%	75.8%	71.8%	75.3%	76.2%	76.1%	81.3%
		U. of Tulsa	Dept of Psych	Clinical	17	17	100.00%	82.2%	83.8%	79.1%	77.1%	84.5%	85.2%	88.9%	84.8%
ON	Carleton U.	Dept of Psych	Experimental	6	5	83.30%	70.0%	69.7%	75.5%	73.9%	71.9%	76.5%	83.5%	75.6%	
	Queens U.	Dept of Psych	Clinical	12	12	100.00%	85.7%	86.2%	78.4%	82.4%	84.5%	84.4%	87.4%	84.5%	
			Applied Developmental	9	8	88.90%	76.6%	76.8%	76.8%	80.0%	80.2%	75.9%	77.8%	83.2%	
		U. of Guelph	Dept of Psych	Clinical	28	22	78.60%	76.5%	75.4%	76.6%	76.6%	69.6%	78.2%	80.7%	81.8%
		U. of Ottawa	School of Psych	Clinical	56	50	89.30%	72.6%	74.8%	71.7%	78.5%	73.1%	76.6%	75.7%	79.3%
			School of Grad Studies	Brain & Behavior	6	6	100.00%	90.3%	91.7%	79.2%	90.4%	87.9%	81.6%	86.1%	90.0%
				Child Development-Applied Developmental	4	4	100.00%	82.1%	84.0%	83.4%	87.7%	83.9%	86.9%	86.0%	87.7%
		U. of Waterloo	Dept of Psych	Applied Psych	6	6	100.00%	67.9%	77.2%	74.4%	82.6%	76.2%	79.2%	78.2%	80.1%
				Biopsychology	4	3	75.00%	79.6%	77.3%	68.5%	66.7%	73.2%	71.2%	76.8%	75.0%
				Clinical	9	9	100.00%	82.5%	87.9%	81.6%	83.4%	87.3%	85.6%	89.3%	87.8%
		U. of Western Ontario	Dept of Psych	Clinical	11	9	81.80%	75.0%	80.4%	75.8%	78.3%	75.3%	79.0%	77.9%	80.4%
		U. of Windsor	Dept of Psych	Clinical	43	40	93.00%	81.3%	82.6%	78.2%	78.6%	80.6%	80.9%	82.9%	83.4%
		York U.	Grad Program in Psych	Clinical - Adult	25	25	100.00%	79.2%	79.4%	77.5%	74.8%	77.9%	83.3%	81.2%	81.5%
			Clinical-Developmental	10	10	100.00%	77.3%	81.2%	74.7%	85.0%	80.2%	84.4%	83.4%	84.6%	
			Social-Personality	3	1	33.30%	55.2%	70.8%	63.9%	58.3%	67.9%	61.6%	73.8%	77.8%	
OR	George Fox College	Grad School of Clinical Psych	Clinical	70	51	72.90%	70.9%	71.7%	71.9%	70.7%	65.8%	73.3%	60.2%	79.7%	
			Clinical	102	84	82.40%	75.5%	73.1%	75.8%	73.9%	71.7%	78.3%	67.8%	81.1%	
		Pacific U.	School of Professional Psych	Counseling	24	24	100.00%	73.6%	78.3%	80.8%	76.5%	73.5%	81.8%	82.2%	84.3%
			School	4	4	100.00%	65.9%	73.1%	68.8%	68.3%	75.9%	73.9%	76.8%	82.6%	
			Dept of Psych	Clinical	12	11	91.70%	76.9%	76.9%	73.3%	74.8%	74.8%	74.3%	81.3%	80.0%
PA	Allegheny U. Hlth. Sci. (formerly Hahnemann U.)	Dept of Clinical and Health Psych	Clinical	4	4	100.00%	85.5%	86.1%	80.4%	80.8%	83.6%	79.6%	92.1%	81.6%	

Designated Doctoral Program in Psychology				EPPP Performance			Percent correct by content area							
Jurisdiction	SCHOOL	DEPARTMENT	PROGRAM	NUM	PASS	PASS RATE	Biological Bases of Behavior	Cognitive-Affective Bases of Behavior	Social & Multicultural Bases of Behavior	Growth & Lifespan Development	Assessment and Diagnosis	Treatment/ Intervention	Research Methods	Ethical/Legal/ Professional Issues
	Bryn Mawr College	Dept of Psych	Clinical Developmental	15	15	100.00%	75.3%	74.8%	79.4%	83.5%	79.9%	84.5%	81.9%	84.7%
	Chestnut Hill College	Dept. of Prof Psych	Clinical	65	49	75.40%	71.2%	71.2%	66.1%	69.8%	64.8%	70.9%	64.6%	76.0%
	Drexel U.	Dept of Psych Sociology & Anthropology	Clinical	56	47	83.90%	77.3%	73.6%	72.2%	72.0%	71.9%	75.9%	76.8%	77.7%
	Duquesne U.	Dept of Psych	General Phenomenological Psych	25	19	76.00%	74.0%	73.0%	75.8%	75.5%	69.3%	74.2%	63.4%	80.0%
	Immaculata College	Dept of Psych	Clinical	52	40	76.90%	71.5%	66.8%	70.5%	69.4%	64.3%	72.4%	55.3%	77.4%
	Indiana Univ of Pennsylvania	Department of Psych	Clinical	20	20	100.00%	78.4%	82.3%	80.0%	80.5%	75.3%	81.5%	82.0%	81.3%
	LaSalle U.	Dept of Psych	Clinical	37	31	83.80%	74.6%	75.6%	73.8%	73.8%	71.5%	77.5%	69.8%	78.4%
	Lehigh U.	Dept of Counseling Psych	Counseling	15	13	86.70%	68.2%	67.4%	74.9%	70.2%	72.9%	72.0%	78.5%	79.1%
			School	12	10	83.30%	65.2%	76.1%	73.3%	73.5%	70.5%	72.1%	75.6%	74.4%
	Marywood U.	Dept of Psych & Counseling	Clinical	6	5	83.30%	73.6%	69.8%	66.0%	67.8%	70.8%	75.5%	69.0%	73.9%
	Pennsylvania State U.	Dept of Psych	Clinical	33	33	100.00%	78.3%	82.3%	79.2%	79.9%	80.8%	82.1%	86.5%	83.0%
		Div of Counselor Education	Counseling Psych	22	18	81.80%	68.7%	72.5%	73.4%	73.3%	69.3%	75.6%	72.5%	77.0%
		Div of Ed & School Psych	School	7	7	100.00%	72.3%	83.7%	74.4%	80.8%	83.9%	76.5%	87.1%	82.9%
	Temple U.	Dept of Psych	Clinical	28	28	100.00%	80.0%	84.2%	81.8%	84.8%	81.6%	84.5%	87.9%	83.6%
		Dept of Psychological Studies in Education	Counseling	34	25	73.50%	71.7%	71.9%	72.7%	71.7%	69.6%	72.1%	72.4%	77.2%
			School	15	13	86.70%	67.7%	67.5%	67.7%	68.0%	66.4%	71.7%	67.4%	78.0%
	U. of Pennsylvania	Dept of Psych	Clinical	8	8	100.00%	79.5%	86.7%	84.3%	80.4%	83.5%	87.1%	91.1%	85.5%
		Grad School of Education	Combined Prof Scientific	9	9	100.00%	78.8%	74.5%	82.5%	80.0%	79.2%	79.8%	85.5%	86.7%
	U. of Pittsburgh	Dept of Psych	Clinical	13	13	100.00%	77.7%	82.7%	84.2%	83.9%	81.6%	84.0%	90.7%	79.8%
		Dept of Psych in Education	Counseling	9	7	77.80%	71.4%	70.4%	72.3%	72.3%	61.8%	69.4%	60.4%	78.9%
	Widener U.	Institute for Grad Clinical Psych	Clinical	98	88	89.80%	76.4%	75.5%	75.1%	76.7%	75.1%	78.6%	72.2%	81.8%
			Clinical Psych Health & Medical	5	5	100.00%	79.8%	77.7%	77.3%	78.6%	72.9%	81.9%	80.0%	82.1%
			Clinical Psych Law	7	5	71.40%	65.6%	68.5%	73.7%	66.0%	63.8%	73.5%	64.5%	80.1%
PR	Carlos Albizu U./ San Juan	Center for Advanced Studies	Clinical	39	13	33.30%	59.8%	54.1%	58.3%	54.7%	52.3%	62.2%	42.8%	67.9%

Designated Doctoral Program in Psychology				EPPP Performance			Percent correct by content area							
Jurisdiction	SCHOOL	DEPARTMENT	PROGRAM	NUM	PASS	PASS RATE	Biological Bases of Behavior	Cognitive-Affective Bases of Behavior	Social & Multicultural Bases of Behavior	Growth & Lifespan Development	Assessment and Diagnosis	Treatment/Intervention	Research Methods	Ethical/Legal/Professional Issues
	Ponce School of Medicine	Clin Psych Doctoral Program	Clinical	14	8	57.10%	76.9%	59.3%	59.8%	60.4%	61.7%	66.4%	51.0%	71.7%
<b>QC</b>	Concordia U.	Dept of Psych	Clinical	11	10	90.90%	79.7%	85.0%	82.7%	82.5%	79.6%	81.6%	90.2%	85.8%
	McGill U.	Dept of Educ & Couns Psych	Counseling	15	9	60.00%	62.0%	71.4%	67.6%	72.1%	59.7%	66.6%	67.9%	75.4%
		Dept of Psych	Clinical	15	15	100.00%	83.2%	85.9%	79.2%	82.5%	79.1%	84.0%	86.7%	83.4%
	U. of Montreal	Dept of Psych	Clinical Neuropsychology	3	3	100.00%	87.9%	89.7%	80.6%	91.0%	86.9%	91.0%	88.1%	90.1%
<b>RI</b>	U. of Rhode Island	Dept of Psych	Clinical	26	20	76.90%	73.1%	73.1%	72.4%	72.4%	69.6%	76.5%	72.9%	79.6%
			School	9	7	77.80%	69.1%	68.8%	71.4%	75.3%	72.1%	73.5%	69.4%	78.8%
<b>SC</b>	U. of South Carolina	Dept of Psych	Clinical	33	32	97.00%	73.6%	78.2%	78.5%	78.0%	77.9%	83.8%	81.0%	84.6%
			School	16	16	100.00%	76.3%	80.0%	75.1%	86.3%	79.2%	82.8%	83.2%	82.1%
<b>SD</b>	U. of South Dakota	Dept of Psych	Clinical	24	20	83.30%	69.7%	74.7%	73.0%	69.2%	69.9%	77.6%	69.7%	81.3%
<b>SK</b>	U. of Regina	Dept of Psych	Clinical	11	9	81.80%	72.5%	72.7%	66.8%	72.1%	72.4%	74.0%	72.1%	80.9%
	U. of Saskatchewan	Dept of Psych	Clinical	21	19	90.50%	79.8%	76.1%	79.6%	77.9%	76.2%	81.4%	84.6%	84.8%
<b>TN</b>	George Peabody College of Vanderbilt U.	Dept of Psych & Human Development	Clinical	7	7	100.00%	78.1%	81.6%	76.3%	84.1%	76.7%	82.2%	84.2%	81.5%
	Tennessee State U.	Dept of Psych	Counseling	43	20	46.50%	58.2%	58.1%	60.0%	61.2%	57.8%	63.8%	57.4%	71.5%
	U. of Memphis (formerly Memphis State U.)	Dept of Counseling Educational Psych and Research	Counseling	9	5	55.60%	61.0%	67.1%	69.8%	69.4%	66.7%	77.0%	63.5%	74.8%
		Dept of Psych	Behavioral Medicine	3	3	100.00%	79.3%	84.2%	79.2%	78.8%	81.0%	85.8%	90.5%	86.7%
			Clinical	22	20	90.90%	77.8%	79.4%	75.8%	75.4%	77.6%	78.5%	82.9%	83.9%
			School	4	1	25.00%	61.2%	50.0%	54.5%	60.6%	56.3%	55.0%	51.8%	67.5%
	U. of Tennessee	Dept of Counselor Ed & Counseling Psych	Counseling	17	16	94.10%	70.5%	72.6%	76.3%	71.6%	70.2%	75.4%	64.1%	82.4%
		Dept of Psych	Clinical	28	27	96.40%	79.0%	80.0%	80.2%	80.1%	79.4%	80.9%	82.1%	83.4%
		Dept of Psychoeducational Studies	School	19	15	78.90%	67.2%	71.5%	68.0%	73.0%	69.8%	72.0%	66.7%	77.3%
	Vanderbilt U.	Dept of Psych	Clinical	17	16	94.10%	77.0%	78.9%	78.1%	81.6%	79.5%	78.7%	85.6%	82.5%
<b>TX</b>	Baylor U.	Dept of Psych	Clinical	38	37	97.40%	83.9%	82.8%	78.6%	76.9%	77.6%	84.0%	74.5%	82.3%
	East Texas State U.	Dept of Psych & Special Education	Educational	3	1	33.30%	47.9%	61.2%	54.6%	54.2%	52.4%	48.5%	50.0%	65.6%

Designated Doctoral Program in Psychology				EPPP Performance			Percent correct by content area							
Jurisdiction	SCHOOL	DEPARTMENT	PROGRAM	NUM	PASS	PASS RATE	Biological Bases of Behavior	Cognitive-Affective Bases of Behavior	Social & Multicultural Bases of Behavior	Growth & Lifespan Development	Assessment and Diagnosis	Treatment/Intervention	Research Methods	Ethical/Legal/Professional Issues
	Our Lady of the Lake U.	School of Ed & Clinical Studies	Counseling	18	10	55.60%	65.9%	60.7%	63.8%	61.8%	55.4%	67.9%	52.2%	68.7%
	Rice U.	Dept of Psych	Industrial/Organizational	3	3	100.00%	62.1%	82.1%	79.2%	78.2%	84.5%	70.5%	90.5%	80.3%
	Sam Houston State U.	Dept of Psych	Clinical	16	15	93.80%	77.0%	78.8%	76.2%	80.3%	82.8%	80.6%	79.5%	81.1%
	Texas A & M U.	Dept of Educational Psych	Counseling	43	32	74.40%	66.8%	68.3%	73.6%	69.0%	68.1%	75.4%	68.5%	80.5%
			School	36	25	69.40%	65.7%	68.0%	65.3%	67.7%	72.0%	68.9%	74.5%	77.0%
		Dept of Psych	Clinical	26	26	100.00%	78.5%	84.2%	81.7%	81.2%	82.7%	82.0%	85.0%	81.6%
	Texas Tech U.	Dept of Psych	Clinical	13	13	100.00%	78.1%	80.6%	79.7%	72.5%	78.6%	80.6%	81.3%	81.1%
			Counseling	13	13	100.00%	79.1%	81.9%	80.0%	77.4%	75.4%	80.9%	79.0%	81.9%
	Texas Woman's U.	Dept of Psych & Philosophy	Counseling	18	16	88.90%	73.8%	74.6%	74.7%	73.5%	68.0%	74.7%	68.1%	78.8%
			School	19	14	73.70%	70.7%	74.2%	69.1%	69.8%	67.7%	74.0%	67.0%	78.4%
	U. of Houston-U. Park	Dept of Educational Psych	Counseling	33	20	60.60%	65.4%	63.0%	67.3%	69.3%	63.2%	67.5%	60.0%	79.3%
		Dept of Psych	Clinical	24	24	100.00%	78.8%	78.4%	76.3%	75.7%	82.5%	82.5%	84.8%	82.0%
			Clinical-Neuropsychology	10	10	100.00%	91.1%	84.7%	82.5%	80.9%	85.4%	88.3%	92.9%	80.8%
	U. of North Texas	Dept of Psych	Clinical	25	24	96.00%	82.4%	79.8%	78.3%	76.4%	78.8%	79.7%	85.0%	83.0%
			Counseling	24	23	95.80%	75.5%	79.4%	79.7%	77.6%	77.2%	80.5%	80.5%	82.0%
			Health Psych/Behavioral Medicine	28	23	82.10%	77.9%	73.7%	68.1%	69.1%	68.1%	73.3%	77.0%	76.3%
	U. of Texas-Austin	Dept of Educational Psych	Counseling	38	30	78.90%	71.6%	71.8%	77.6%	72.2%	69.3%	74.8%	69.3%	80.9%
			School	47	42	89.40%	73.9%	77.2%	75.4%	77.0%	77.9%	78.3%	76.8%	78.9%
		Dept of Psych	Clinical	21	19	90.50%	79.4%	79.6%	77.5%	76.4%	82.0%	84.0%	85.9%	79.2%
	U. of Texas-SW Med Ctr at Dallas-Grad School of Biomedical S	Division of Psych	Clinical	31	30	96.80%	82.0%	78.2%	79.3%	77.8%	76.7%	78.9%	75.6%	82.0%
<b>UT</b>	Brigham Young U.	Dept of Education	Counseling	27	15	55.60%	67.9%	67.4%	67.6%	63.5%	64.7%	68.9%	58.3%	74.4%
		Dept of Psych	Clinical	35	33	94.30%	75.9%	77.6%	76.9%	74.5%	77.9%	78.1%	77.6%	80.7%
	U. of Utah	Dept of Educational Psych	Counseling	26	23	88.50%	71.4%	74.1%	77.0%	72.9%	71.2%	77.8%	71.1%	81.3%
			School	14	12	85.70%	73.2%	72.6%	73.2%	74.7%	69.6%	70.4%	65.8%	74.4%

Designated Doctoral Program in Psychology				EPPP Performance			Percent correct by content area							
Jurisdiction	SCHOOL	DEPARTMENT	PROGRAM	NUM	PASS	PASS RATE	Biological Bases of Behavior	Cognitive-Affective Bases of Behav	Social & Multicultural Bases of Behav	Growth & Lifespan Development	Assessment and Diagnosis	Treatment/ Intervention	Research Methods	Ethical/Legal/ Professional Issues
		Dept of Psych	Physiological-Developmental-Clinical	18	18	100.00%	80.6%	80.7%	80.6%	80.4%	81.5%	79.4%	87.1%	84.5%
	Utah State U.	Dept of Psych	Comb Clin/Coun/School	18	13	72.20%	65.2%	66.6%	65.7%	68.6%	62.5%	67.2%	67.1%	70.5%
<b>VA</b>	Argosy U./ Washington DC	Amer School of Prof Psych	Clinical	203	137	67.50%	68.4%	67.8%	68.8%	68.1%	65.5%	71.5%	58.1%	77.3%
	George Mason U.	Dept of Psych	Clinical	34	34	100.00%	77.3%	82.3%	79.7%	78.6%	80.2%	81.2%	83.9%	82.5%
	Inst for the Psychological Sciences	Dept of Psych	Clinical	3	3	100.00%	70.0%	80.6%	83.3%	69.5%	78.6%	70.0%	83.3%	75.6%
	James Madison U.	Dept of Psych	Comb Clin/Coun/School	20	15	75.00%	66.9%	70.3%	71.2%	66.5%	68.8%	71.7%	65.8%	81.5%
	Regent U.	Schl of Psych & Couns	Clinical	75	48	64.00%	71.2%	64.9%	68.3%	64.4%	61.3%	69.4%	56.7%	75.4%
	U. of Virginia	Curry School of Education	Clinical	33	30	90.90%	80.2%	74.8%	76.7%	78.1%	76.8%	80.0%	77.3%	79.6%
		Dept of Psych	Clinical	16	15	93.80%	78.6%	78.2%	78.2%	81.7%	81.6%	80.6%	90.1%	83.2%
	Virginia Commonwealth U.	Dept of Psych	Clinical	23	22	95.70%	77.9%	77.0%	81.4%	77.1%	81.2%	82.7%	84.6%	82.2%
			Counseling	22	20	90.90%	74.2%	77.0%	81.0%	78.5%	77.1%	79.5%	82.3%	80.7%
	Virginia Consortium Prog in Clinical Psych	Dept of Psych	Clinical	29	25	86.20%	74.7%	69.2%	74.2%	74.7%	70.3%	77.1%	71.6%	80.9%
	Virginia Polytechnic Institute & State U.	Dept of Psych	Clinical	25	24	96.00%	78.5%	80.9%	77.3%	77.1%	78.4%	82.2%	83.4%	81.9%
<b>VT</b>	U. of Vermont	Dept of Psych	Clinical	31	29	93.50%	77.6%	79.2%	78.1%	78.6%	74.5%	79.5%	84.3%	81.0%
<b>WA</b>	Seattle Pacific Univ	Dept of Psych	Clinical	47	30	63.80%	65.8%	64.8%	71.8%	67.8%	63.8%	70.3%	61.1%	74.6%
	U. of Washington	College of Education	School	8	8	100.00%	82.0%	78.2%	78.7%	81.9%	76.8%	81.0%	74.6%	85.5%
		Dept of Psych	Child Clinical	9	9	100.00%	77.6%	83.2%	76.7%	83.9%	82.5%	85.6%	90.5%	83.7%
			Clinical	15	14	93.30%	73.9%	80.2%	83.5%	79.4%	76.8%	82.9%	85.6%	77.9%
	Washington State U.	Dept of Educational Leadership	Counseling	19	12	63.20%	64.7%	66.3%	65.9%	65.6%	60.7%	68.0%	64.1%	74.5%
		Dept of Psych	Clinical	19	18	94.70%	80.7%	81.6%	78.3%	73.5%	76.5%	78.2%	78.0%	81.1%
<b>WI</b>	Marquette U.	Dept of Psych	Clinical	17	17	100.00%	78.6%	84.0%	79.6%	75.0%	80.1%	83.3%	81.8%	79.8%
		School of Education	Counseling	13	8	61.50%	63.5%	59.2%	71.6%	68.5%	62.1%	71.9%	60.4%	75.9%

Designated Doctoral Program in Psychology				EPPP Performance			Percent correct by content area							
Jurisdiction	SCHOOL	DEPARTMENT	PROGRAM	NUM	PASS	PASS RATE	Biological Bases of Behavior	Cognitive-Affective Bases of Behavior	Social & Multicultural Bases of Behavior	Growth & Lifespan Development	Assessment and Diagnosis	Treatment/Intervention	Research Methods	Ethical/Legal/Professional Issues
	U. of Wisconsin-Madison	Dept of Counseling Psych	Counseling	22	18	81.80%	63.9%	72.8%	79.9%	70.5%	72.1%	77.0%	77.3%	80.6%
		Dept of Educational Psych	School	11	10	90.90%	76.4%	80.1%	78.4%	79.0%	73.1%	76.1%	76.6%	80.6%
		Dept of Psych	Clinical	10	10	100.00%	78.6%	86.5%	84.1%	79.8%	84.0%	83.7%	89.2%	80.1%
		Dept of Rehab Psych & Special Ed	Rehab Counseling	5	3	60.00%	65.9%	54.9%	77.3%	60.3%	62.1%	66.0%	57.1%	78.0%
	U. of Wisconsin-Milwaukee	Dept of Educational Psych	Counseling	11	8	72.70%	63.9%	66.3%	68.7%	69.8%	60.7%	74.6%	65.6%	76.5%
			School	6	5	83.30%	79.9%	76.3%	72.1%	78.4%	81.9%	82.8%	82.9%	80.5%
		Dept of Psych	Clinical	20	19	95.00%	75.1%	78.1%	75.9%	78.6%	78.4%	80.4%	80.1%	80.4%
	Wisconsin School of Professional Psych	N/A	Clinical	18	14	77.80%	67.8%	65.2%	65.0%	65.3%	62.3%	68.6%	57.0%	74.4%
<b>WV</b>	Marshall U.	Dept of Psych	Clinical	5	3	60.00%	62.3%	57.7%	62.5%	57.7%	60.0%	64.9%	37.1%	70.7%
	West Virginia U.	Dept of Counseling Rehabilitation	Counseling	28	17	60.70%	63.5%	65.7%	67.9%	66.7%	61.4%	70.5%	61.2%	76.8%
		Dept of Psych	Adult Clinical	16	12	75.00%	72.2%	73.2%	70.4%	74.9%	70.4%	72.8%	71.6%	82.4%
			Child Clinical	15	14	93.30%	74.3%	79.1%	78.3%	78.1%	74.6%	83.5%	80.6%	80.7%
<b>WY</b>	U. of Wyoming	Dept of Psych	Clinical	10	10	100.00%	70.2%	75.5%	79.9%	73.9%	72.5%	81.4%	77.4%	79.3%